

**be:sample**  
**be:colorful**  
**be:flexible**

**bejot:studio design**

Możliwości zastosowania tkanin w poszczególnych produktach  
 Possibilities of using fabrics in individual products  
 Verfügbarkeit von Stoffen für einzelne Produkte

	alaska	ally	alpa	blazer	bond	charles	cura	cyber	easy	era	fenno	hush	keimo
alberi				•								•	
barbara	•	•	•		•						•		
belt	•	•	•	•	•	•	•	•	•	•	•		•
booi	•	•	•	•		•	•	•	•		•		
booi:workstation	•	•	•	•		•	•	•	•		•		
clip	•	•	•	•	•	•	•	•	•	•	•		•
corr	•	•	•	•	•	•	•	•	•	•	•		•
cube	•	•	•	•	•	•	•	•	•	•	•		•
dual	•	•	•	•	•	•	•	•	•	•	•		•
eggo	•	•	•	•	•	•	•	•	•	•	•		•
eleven	•	•	•	•	•	•	•	•	•	•	•		•
epocc	•	•	•	•	•	•	•	•	•	•	•		•
epocc_lounge	•	•	•	•		•	•	•	•	•	•		•
fendo	•	•	•	•	•	•	•	•	•		•		•
flathouse	•	•	•	•		•	•	•	•		•		
flos	•	•	•	•		•	•	•	•		•		•
flos:acoustics	•	•	•	•		•	•	•	•	•	•		
fora_care	•	•	•	•		•	•	•	•				
fora_care walls	•	•	•	•		•	•	•	•				
fora_lounge	•	•	•	•		•	•	•	•				
fora_office	•	•	•	•		•	•	•	•				
gummy_bear	•	•	•	•	•	•	•	•	•	•	•		•
haali chairs	•	•	•	•	•	•	•	•	•	•	•		•
haali walls	•	•	•	•		•	•				•		
haali table	•	•	•		•	•	•	•	•	•	•		•
hens	•	•	•	•	•	•	•	•	•	•	•		•
jelly	•		•	•		•							
kyos	•	•	•	•	•	•	•	•	•	•	•		•
leaf_pod walls				•									
	alaska	ally	alpa	blazer	bond	charles	cura	cyber	easy	era	fenno	hush	keimo

● Wszystkie modele występują w danej tkaninie.  
All models are available in the chosen fabric.  
Alle Modelle sind in dem angegebenen Stoff erhältlich.

○ Nie wszystkie modele występują w danej tkaninie (sprawdź w cenniku).  
Not all models are available in the chosen fabric (check the price list).  
Nicht alle Modelle sind in dem angegebenen Stoff erhältlich (siehe Preisliste).

leather skóra	lodge	oceanic	pastel	remix	rhythm	roccia	sawana	silvertex	steelcut	synergy	valencia	
												alberi
	●	●		●		●			●			barbara
●	●	●	●	●	●	●	●	●	●	●	●	belt
●	●	●		●		●			●	●	●	booi
○	●	●		●		●			●	●		booi:workstation
●	●	●	●	●		●	●	●	●	●	●	clip
●	●	●	●	●	●	●	●	●	●	●	●	corr
●	●	●	●	●	●	●	●	●	●	●	●	cube
●	●	●	●	●	●	●	●	●	●	●	●	dual
●	●	●	●	●		●	●	●	●	●	●	eggo
●	●	●	●	●		●	●	●	●	●	●	eleven
●	●	●	●	●		●	●	●	●	●		epocc
●	●	●	●	●		●		●	●	●		epocc_lounge
●	●	●	●	●		●	●	●	●	●	●	fendo
	●	●	●	●		●			○	●		flathouse
●	●	●	●	●		●		●	●	●		flos
	●	●	●	●		●			●	●		flos:acoustics
	●	●	●	●		●		●	●	●	●	fora_care
	●	●	●	●		●			●	●		fora_care walls
	●	●	●	●		●			●	●		fora_lounge
	●	●	●	●		●			●	●		fora_office
●	●	●	●	●		●	●	●	●	●	●	gummy_bear
●	●	●	●	●	●	●	●	●	●	●	●	haali chairs
		●		●		●			●	●		haali walls
	●	●	●	●	●	●	●	●	●	●	●	haali table
●	●	●	●	●	●	●	●	●	●	●		hens
		●							●	●		jelly
●	●	●	●	●	●	●	●	●	●	●	●	kyos
										●		leaf_pod walls
leather skóra	lodge	oceanic	pastel	remix	rhythm	roccia	sawana	silvertex	steelcut	synergy	valencia	

**Możliwości zastosowania tkanin w poszczególnych produktach**  
**Possibilities of using fabrics in individual products**  
**Verfügbarkeit von Stoffen für einzelne Produkte**

	alaska	ally	alpa	blazer	bond	charles	cura	cyber	easy	era	fenno	hush	keimo
leaf_pod sofa	●	●	●	●	●	●	●	●	●		●		●
legvan	●	●	●	●	●	●	●	●	●		●		●
lift	●	●	●	●	●	●	●	●	●	●	●		●
linje	●	●	●	●	●	●	●	●	●		●		●
lumi	●	●	●	●	●	●	●	●	●	●	●		●
mate	●	●	●	●	●	●	●	●	●	●	●		●
milla:plus	●	●	●	●	●	●	●	●	●	●	●		●
momo	●	●	●	●	●	●	●	●	●	●	●		●
multiwall	●	●	●	●		●	●	●	●		●		
nubi	●	●	●	●		●	●	●			●		●
nubi walls	●	●	●	●		●	●	●			●		
orte:3DH		●		●	●	●	●	●	●	●	●		●
orte:AH	●	●	●	●	●	●	●	●	●	●	●		●
orte	●	●	●	●	●	●	●	●	●		●		●
ox:co	●	●	●	●	●	●	●	●	●		●		●
ox:co_small	●	●	●	●	●	●	●	●	●		●		●
plint	●	●	●	●	●	●	●	●	●		●		●
plint walls	●	●	●	●		●	●	●	●		●		
point	●	●	●	●	●	●	●	●	●	●	●		●
quadra	●	●	●	●	●	●	●	●	●		●		●
quadra walls	●	●	●	●		●	●	●	●		●		
quadra:phone_box	●	●	●	●		●	●	●	●		●		
quadra:standing_box	●	●	●	●		●	●	●	●		●		
quadra:workplace_box	●	●	●	●		●	●	●	●		●		
saar	●	●	●	●	●	●	●	●	●	○	●		○
selva free, sky, wall	●	●	●	●	●	●	●	●	●	●	●	●	
selva desk, hang	●	●	●	●		●	●	●	●		●		
silent_block	●	●	●	●	●	●	●	●	●	●	●	●	
	alaska	ally	alpa	blazer	bond	charles	cura	cyber	easy	era	fenno	hush	keimo

● Wszystkie modele występują w danej tkaninie.  
All models are available in the chosen fabric.  
Alle Modelle sind in dem angegebenen Stoff erhältlich.

○ Nie wszystkie modele występują w danej tkaninie (sprawdź w cenniku).  
Not all models are available in the chosen fabric (check the price list).  
Nicht alle Modelle sind in dem angegebenen Stoff erhältlich (siehe Preisliste).

leather skóra	lodge	oceanic	pastel	remix	rhythm	roccia	sawana	silvertex	steelcut	synergy	valencia	
●	●	●	●	●		●	●	●	●	●	●	leaf_pod sofa
●	●	●	●	●		●	●	●	●	●	●	legvan
●	●	●	●	●	●	●	●	●	●	●		lift
	●	●	●	●		●		●	●	●	●	linje
●	●	●	●	●		●	●	●	●	●	●	lumi
●	●	●	●	●	○	●	●	●	●	●	○	mate
●	●	●	●	●	●	●	●	●	●	●	●	milla:plus
●	●	●	●	●	○	●	●	●	●	●	●	momo
	●	●	●	●		●			●	●		multiwall
	●			●		●		●	●	●	●	nubi
	●			●		●			●	●		nubi walls
●	●	●		●		●	●	●		●	●	orte:3DH
●	●	●		●		●	●	●	●	●	●	orte:AH
●	●	●	●	●		●	●	●	●	●	●	orte
●	●	●	●	●		●	●	●	●	●	●	ox:co
●	●	●	●	●		●	●	●	●	●	●	ox:co_small
●	●	●	●	●		●	●	●	●	●	●	plint
	●	●		●		●			●	●		plint walls
●	●	●	●	●	●	●	●	●	●	●	●	point
●	●	●	●	●		●	●	●	●	●	●	quadra
	●	●	●	●		●			●	●		quadra walls
	●	●	●	●		●			●	●		quadra:phone_box
	●	●	●	●		●			●	●		quadra:standing_box
	●	●	●	●		●			●	●		quadra:workplace_box
○	●	●	●	●		●	●	○	●	●	○	saar
	●	●	●	●	●	●	●		●	●		selva free, sky, wall
	●	●	●	●	●	●			●	●		selva desk, hang
	●	●	●	●		●	●		●	●		silent_block
leather skóra	lodge	oceanic	pastel	remix	rhythm	roccia	sawana	silvertex	steelcut	synergy	valencia	

**Możliwości zastosowania tkanin w poszczególnych produktach**  
**Possibilities of using fabrics in individual products**  
**Verfügbarkeit von Stoffen für einzelne Produkte**

	alaska	ally	alpa	blazer	bond	charles	cura	cyber	easy	era	fenno	hush	keimo
social_swing seats	●	●	●	●	●	●	●	●	●	●	●		●
social_swing base	●	●	●	●		●	●	●	●		●		
social_swing table	●	●	●	●	●	●	●	●	●	●	●		●
spin	●	●	●	●	●	●	●	●	●	●	●		●
treehouse	●	●	●	●		●	●	●	●		●		
u_floe	●	●	●	●	●	●	●	●	●		●		●
umm	●	●	●	●		●	●	●	●		●		
vieni	●	●	●	●		●	●	●	●		●		
vieni:soft	●	●	●	●		●			●		●		
volo	●	●	●	●	●	●	●	●	●	●	●		●
voo_voo	●	●	●	●		●	●	●	●		●		●
voo_voo_9xx	●	●	●	●		●	●	●	●		●		●
wei	●	●	●	●	●	●	●	●	●		●		●
	alaska	ally	alpa	blazer	bond	charles	cura	cyber	easy	era	fenno	hush	keimo

⊙ Wszystkie modele występują w danej tkaninie.  
 All models are available in the chosen fabric.  
 Alle Modelle sind in dem angegebenen Stoff erhältlich.

○ Nie wszystkie modele występują w danej tkaninie (sprawdź w cenniku).  
 Not all models are available in the chosen fabric (check the price list).  
 Nicht alle Modelle sind in dem angegebenen Stoff erhältlich (siehe Preisliste).

leather skóra	lodge	oceanic	pastel	remix	rhythm	roccia	sawana	silvertex	steelcut	synergy	valencia	
○	●	●	●	●		●	●	●	●	●	●	social_swing seats
	●	●	●	●		●			●	●		social_swing base
	●	●	●	●		●	●	●	●	●	●	social_swing table
●	●	●	●	●		●	●	●	●	●	●	spin
	●	●	●	●		●			●	●		treehouse
●	●	●	●	●		●	●	●	●	●	●	u_floe
●	●	●	●	●		●		●	●	●		umm
●	●	●	●	●		●		●	●	●		vieni
●	●	●		●					●	●		vieni:soft
●	●	●	●	●	●	●	●	●	●	●	●	volo
●	●	●	●	●		●	●	●	●	●	●	voo_voo
●	●	●	●	●		●		●	●	●	●	voo_voo_9xx
●	●	●	●	●		●	●	●	●	●	●	wei
leather skóra	lodge	oceanic	pastel	remix	rhythm	roccia	sawana	silvertex	steelcut	synergy	valencia	

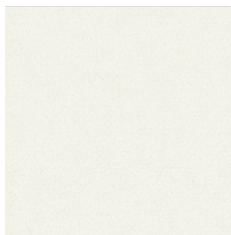
**:2**

grupa cenowa    Preicegruppe    price group

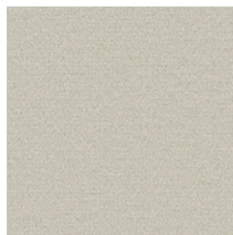
# charles SD

\* Standard Bejot offer  
standardowa oferta Bejot  
Bejots Standardangebot

price group: 2



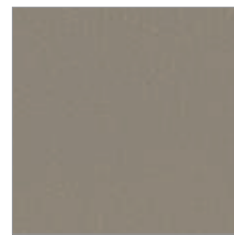
IVORY | CH007



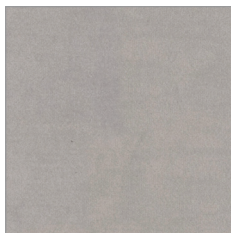
CREAM | CH008



SAND | CH006\*



MUSHROOM | CH009\*



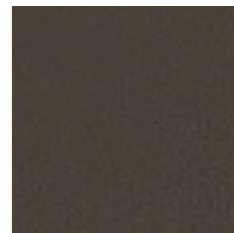
PELICAN | CH005\*



CASTOR | CH003



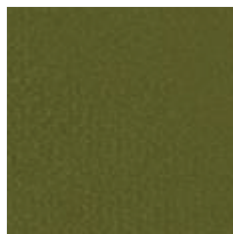
TRUFFLE | CH004\*



TEAK | CH012



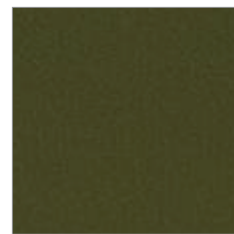
ACACIA | CH041\*



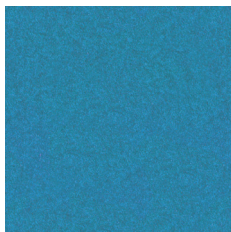
LEAF | CH043



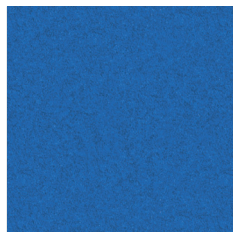
OLIVE | CH042



KHAKI | CH044\*



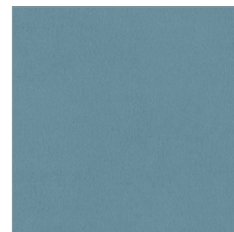
MALIBU | CH036



DENIM | CH035



MIST | CH038\*



CADET | CH034\*



PETROL | CH039



CLOUD | CH037



GARDEN | CH045\*



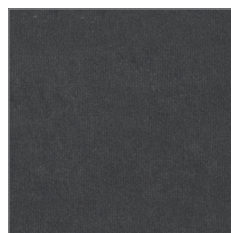
GREENNESS | CH040\*



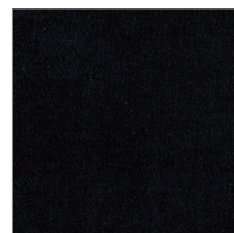
COBALT | CH032\*



IMPERIAL | CH033\*



PEWTER | CH002\*



BLACK | CH001\*

Zdjęcia kolorów produktów na stronie,  
mogą odbiegać od rzeczywistych.

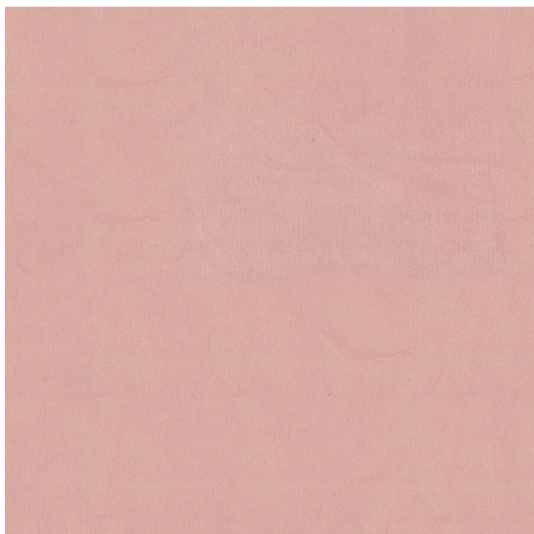
Colours of products presented on this  
website may differ from the actual colours.

Die Bildern der Farben der Produkte auf der  
Website können vom Original abweichen.

# charles SD

\* Standard Bejot offer  
standardowa oferta Bejot  
Bejots Standardangebot

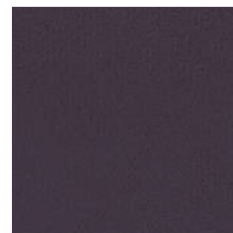
price group: 2



MELLOW | CH030\*



IRIS | CH029



GRAPE | CH028



CONFETTI - CH020



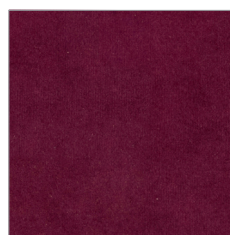
DAHLIA | CH027



MAGENTA | CH026



RASBERRY | CH022\*



VINO | CH024\*



BURGUNDY | CH025



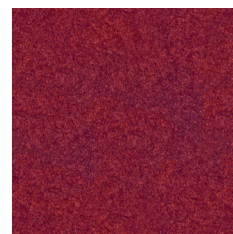
RED | CH021



ORANGE | CH019



NOSTALGIA | CH031



WATERMELON | CH023



RUST | CH018



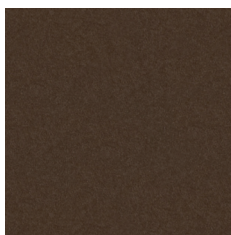
GINGER | CH017



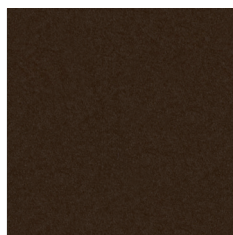
BRONZE | CH010



CARMEL | CH016



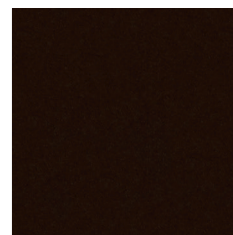
NUT | CH011



AUTUMN | CH015



CHESTNUT | CH013



CHOCOLATE | CH014

Zajęcia kolorów produktów na stronie,  
mogą odbiegać od rzeczywistych.

Colours of products presented on this  
website may differ from the actual colours.

Die Bildern der Farben der Produkte auf der  
Website können vom Original abweichen.



**apretura wodoodporna**  
wasserdichtes Finish  
water repellent

## pl:

**Skład**  
100% poliester

**Waga**  
433 g/m<sup>2</sup>

**Szerokość rolki**  
140 cm

**Odporność na ścieranie**  
90 000 cykli Martindale'a  
(BS EN ISO 12947-2:2000)

**Pilling**  
5 (EN ISO 12945-2:2000)

**Odporność na światło**  
5 (ISO 105-B02)

**Odporność koloru na tarcie**  
Mokre: 4-5 (UNI EN ISO 105-X12)  
Suche: 4-5 (UNI EN ISO 105-X12)

**Certyfikaty trudnopalności**  
• DIN EN 1021-1

### Czyszczenie



Tkanina Charles ze względu na strukturę (długi włos), podczas użytkowania może układać się w charakterystyczny dla tkanin welurowy sposób, tworzący wrażenie różnych odcieni tapicerki.

Dopuszcza się występowanie różnic odcieni pomiędzy poszczególnymi partiami produkcyjnymi.

## de:

**Zusammensetzung**  
100% Polyester

**Gewicht**  
433 g/m<sup>2</sup>

**Rollenbreite**  
140 cm

**Scheuerfestigkeit**  
90 000 Zyklen Martindale  
(BS EN ISO 12947-2:2000)

**Pilling**  
5 (EN ISO 12945-2:2000)

**Lichtechtheit**  
5 (ISO 105-B02)

**Reibechtheit**  
Nass: 4-5 (UNI EN ISO 105-X12)  
Trocken: 4-5 (UNI EN ISO 105-X12)

**Feuersicherung**  
• DIN EN 1021-1

### Reinigung



Der Stoff Charles kann aufgrund seiner Struktur (langes Haar) im Gebrauch veloursartig angeordnet werden, wodurch der Eindruck von verschiedenen Polstertönen entsteht.

Farbtonunterschiede zwischen einzelnen Produktionschargen sind zulässig.

## en:

**Composition**  
100% Polyester

**Weight**  
433 g/m<sup>2</sup>

**Roll width**  
140 cm

**Abrasion resistance**  
90 000 Martindale cycles  
(BS EN ISO 12947-2:2000)

**Pilling**  
5 (EN ISO 12945-2:2000)

**Light fastness**  
5 (ISO 105-B02)

**Fastness to rubbing**  
Wet: 4-5 (UNI EN ISO 105-X12)  
Dry: 4-5 (UNI EN ISO 105-X12)

**Flammability**  
• DIN EN 1021-1

### Cleaning

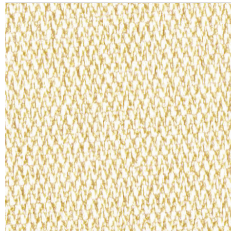


Charles fabric, due to its structure (long hair), can be arranged in a velour way while being used, creating the impression of different shades of upholstery.

Shade differences between individual production batches are allowed.

# era SD

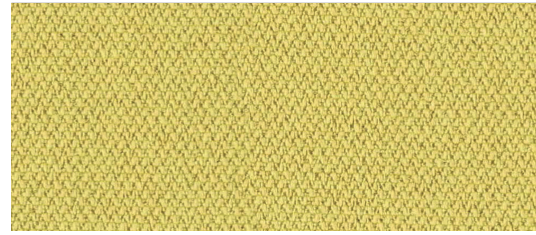
price group: 2



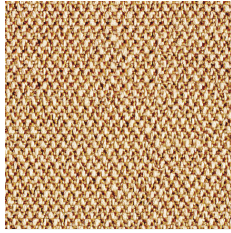
CSE30



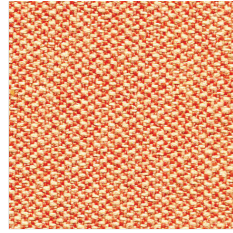
CSE01



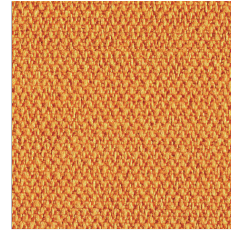
CSE03



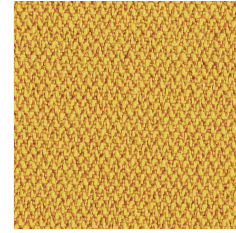
CSE31



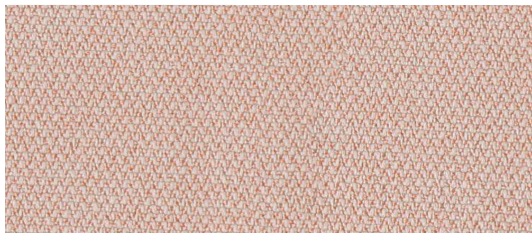
CSE25



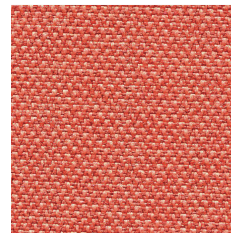
CSE27



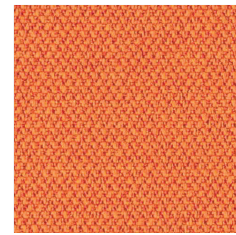
CSE32



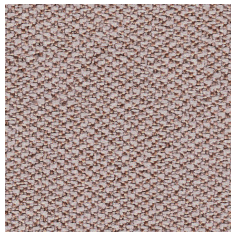
CSE19



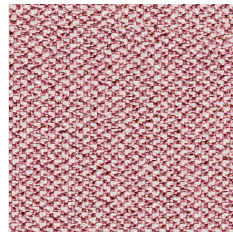
CSE26



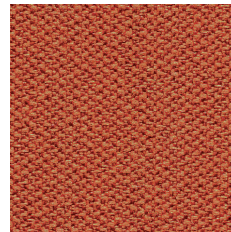
CSE05



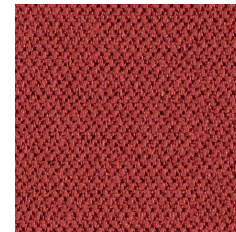
CSE23



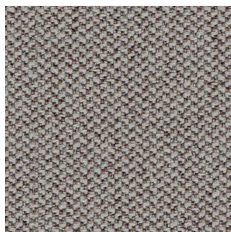
CSE24



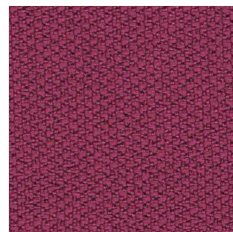
CSE29



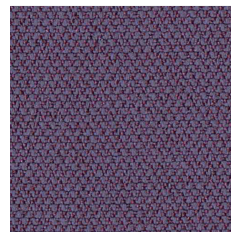
CSE28



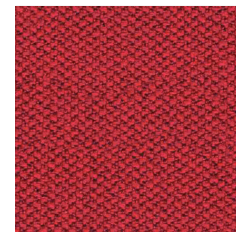
CSE02



CSE17



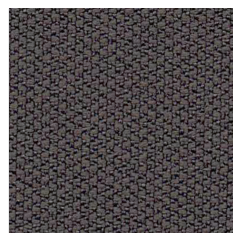
CSE09



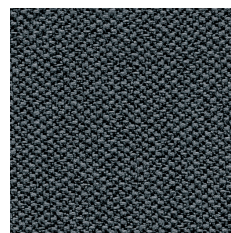
CSE06



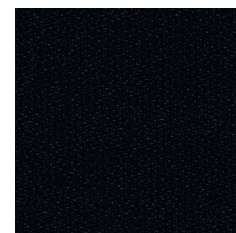
CSE13



CSE21



CSE44



CSE14

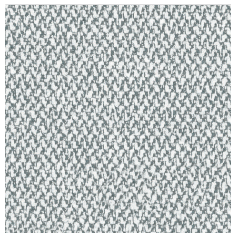
Colours of products presented on this website may differ from the actual colours.

Zdjęcia kolorów produktów na stronie, mogą odbiegać od rzeczywistych.

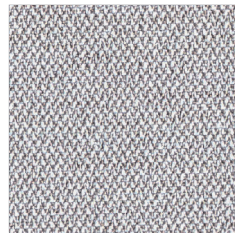
Die Bildern der Farben der Produkte auf der Website können vom Original abweichen.

# era SD

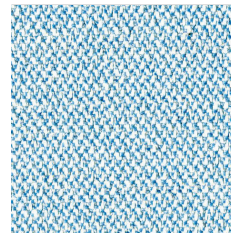
price group: 2



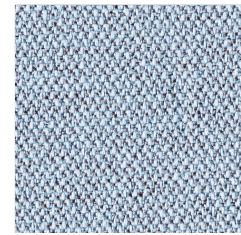
CSE46



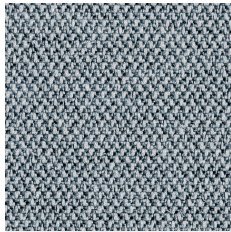
CSE41



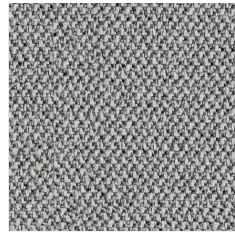
CSE38



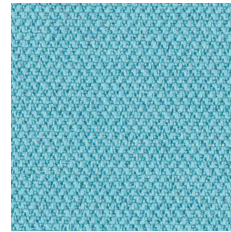
CSE39



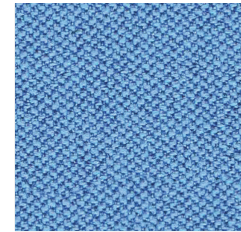
CSE43



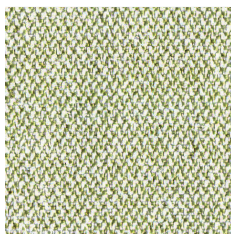
CSE11



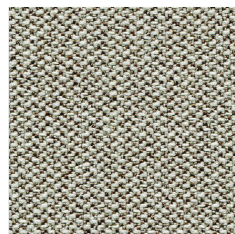
CSE20



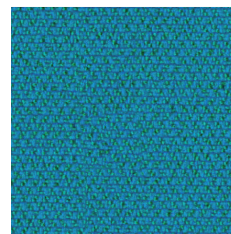
CSE08



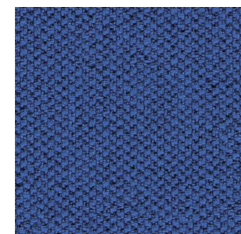
CSE33



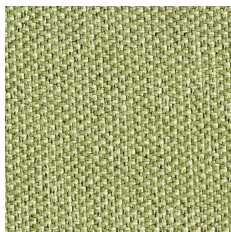
CSE45



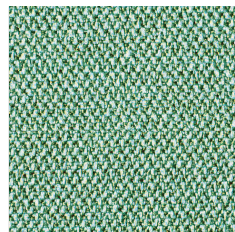
CSE10



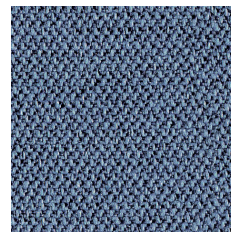
CSE12



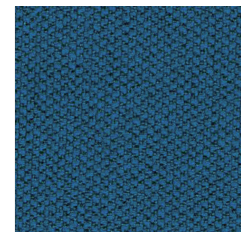
CSE34



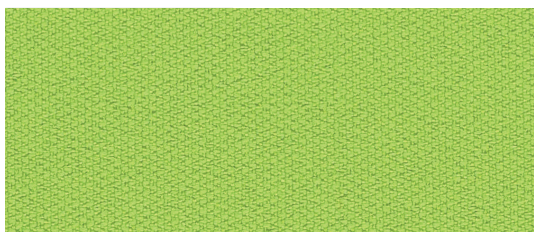
CSE36



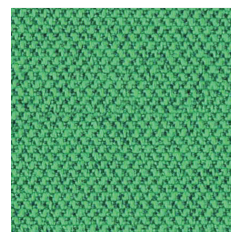
CSE42



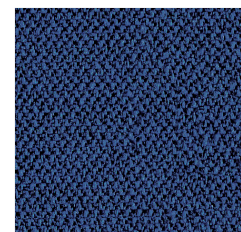
CSE15



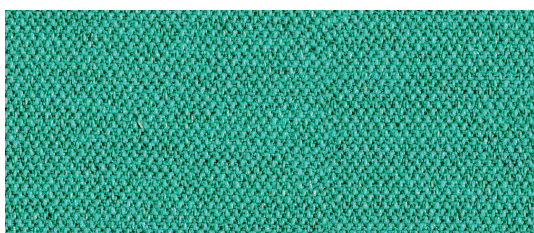
CSE07



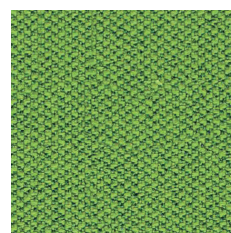
CSE18



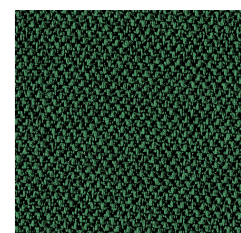
CSE40



CSE37



CSE16



CSE35

Colours of products presented on this website may differ from the actual colours.

Zdjęcia kolorów produktów na stronie, mogą odbiegać od rzeczywistych.

Die Bildern der Farben der Produkte auf der Website können vom Original abweichen.

## pl:

### Skład

100% poliester

### Waga

320 g/m<sup>2</sup> ± 5%

### Szerokość rolki

140 cm

### Odporność na ścieranie

≥100 000 cykli Martindale'a  
(BS EN ISO 12947-2:2016)

### Odporność na światło

5 (ISO 105-B02)

### Odporność koloru na tarcie

Mokre: 4 (ISO 105-X12)  
Suche: 4 (ISO 105-X12)

### Certyfikaty trudnopalności

- EN 1021-1:2014
- EN 1021-2:2014
- BS 7176 Low Hazard

### Czyszczenie

Odkurzaj regularnie. Przetrzyj wilgotną szmatką z wodą i mydłem lub użyj odpowiedniego szamponu do tapicerki. Dla lepszego czyszczenia użyj pary, wybielacza, alkoholu lub profesjonalnego czyszczenia chemicznego. Można prać w 60°C.

Dopuszcza się występowanie różnic odcieni pomiędzy poszczególnymi partiami produkcyjnymi.

## de:

### Zusammensetzung

100% polyester

### Gewicht

320 g/m<sup>2</sup> ± 5%

### Rollenbreite

140 cm

### Scheuerfestigkeit

≥100 000 Zyklen Martindale  
(BS EN ISO 12947-2:2016)

### Lichtechtheit

5 (ISO 105-B02)

### Reibechtheit

Nass: 4 (ISO 105-X12)  
Trocken: 4 (ISO 105-X12)

### Feuersicherung

- EN 1021-1:2014
- EN 1021-2:2014
- BS 7176 Low Hazard

### Reinigung

Regelmässig staubsaugen. Dazu mit einem feuchten Tuch abwischen, oder mit einem speziellen Polsterschaum behandeln. Verwenden Sie für eine gründlichere Reinigung Dampf, Bleichmittel, Alkohol oder eine professionelle chemische Reinigung. Washbar bis 60°C.

Farbtonunterschiede zwischen einzelnen Produktionschargen sind zulässig.

## en:

### Composition

100% polyester

### Weight

320 g/m<sup>2</sup> ± 5%

### Roll width

140 cm

### Abrasion resistance

≥100 000 Martindale cycles  
(BS EN ISO 12947-2:2016)

### Light fastness

5 (ISO 105-B02)

### Fastness to rubbing

Wet: 4 (ISO 105-X12)  
Dry: 4 (ISO 105-X12)

### Flammability

- EN 1021-1:2014
- EN 1021-2:2014
- BS 7176 Low Hazard

### Cleaning

Vacuum regularly. Wipe with a damp cloth using soap and water or use proprietary upholstery shampoo. For deeper cleaning use steam, bleach, alcohol or professionally dry clean. Can be washed at 60°C.

Shade differences between individual production batches are allowed.

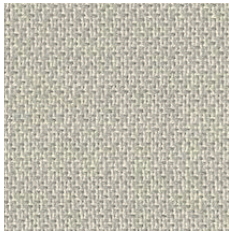
**:3**

grupa cenowa    Preicegruppe    price group

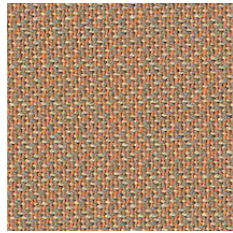
# ally SD

price group: 3

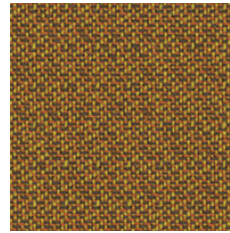
\* Standard Bejot offer  
standardowa oferta Bejot  
Bejots Standardangebot



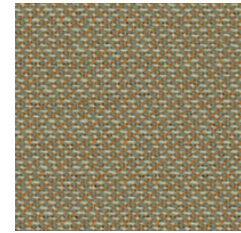
AL730\* (MPN 6730)



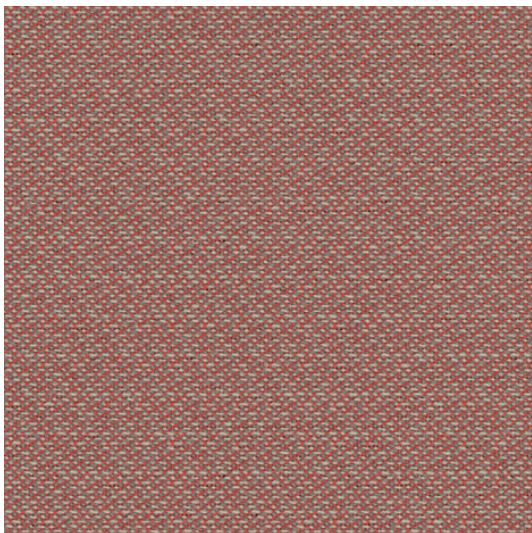
AL124\* (MPN 3124)



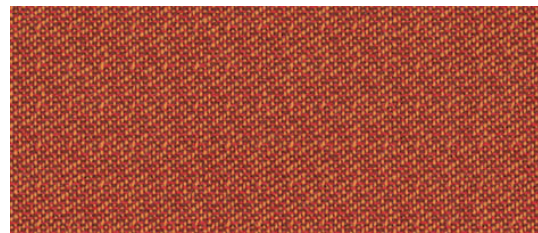
6954



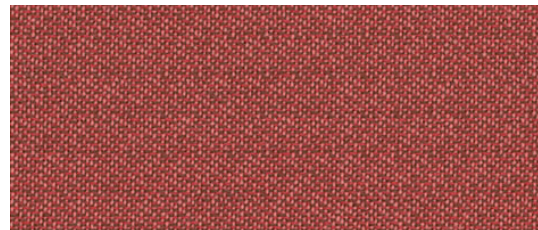
6742



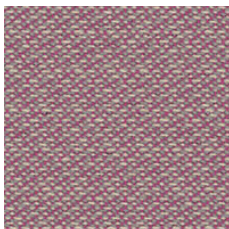
3543



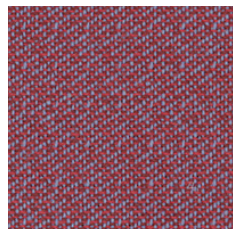
3436



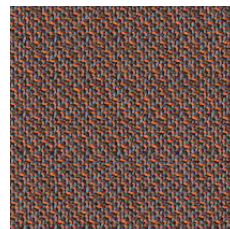
3635



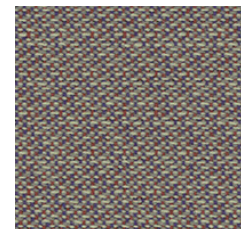
3742



3744



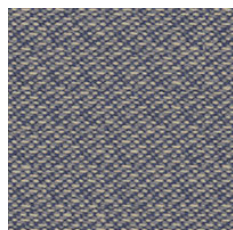
AL063\* (MPN 3063)



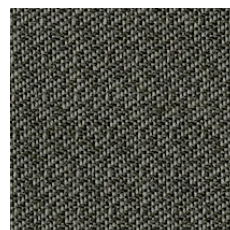
3952



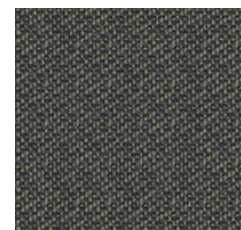
3963



4060



AL770\* (MPN 6770)



6780

Colours of products presented on this website may differ from the actual colours.

MPN stands for the manufacturer's catalog number.

Zdjęcia kolorów produktów na stronie, mogą odbiegać od rzeczywistych.

MPN oznacza numer katalogowy producenta.

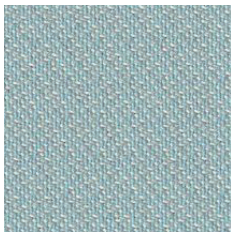
Die Bildern der Farben der Produkte auf der Website können vom Original abweichen.

MPN bedeutet die Katalognummer des Herstellers.

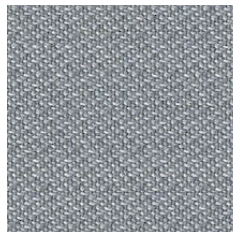
# ally SD

price group: 3

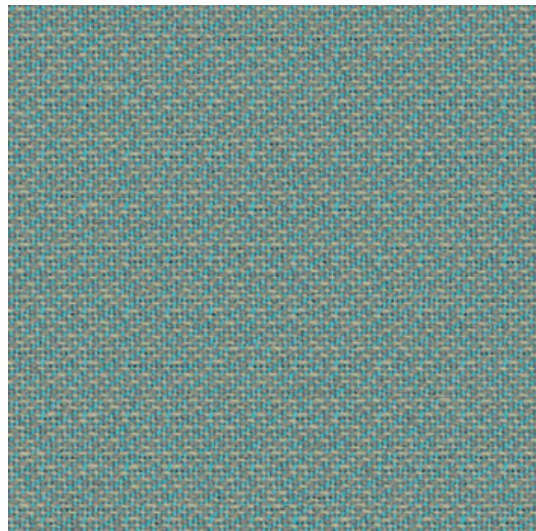
\* Standard Bejot offer  
standardowa oferta Bejot  
Bejots Standardangebot



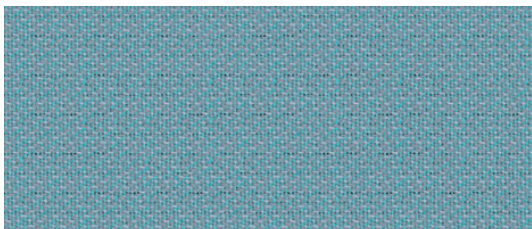
AL430\* (MPN 4730)



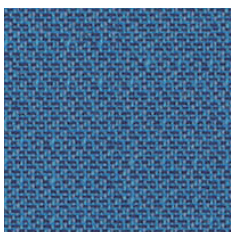
AL330\* (MPN 8330)



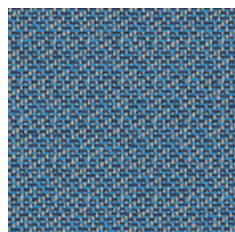
4632



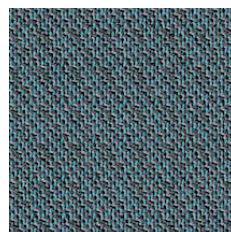
4532



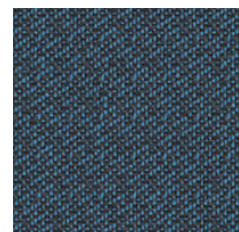
4545



4443



AL653\* (MPN 4653)



4463

Colours of products presented on this website may differ from the actual colours.

MPN stands for the manufacturer's catalog number.

Zdjęcia kolorów produktów na stronie, mogą odbiegać od rzeczywistych.

MPN oznacza numer katalogowy producenta.

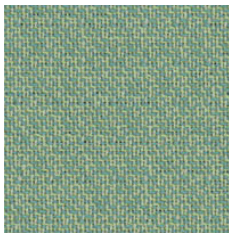
Die Bildern der Farben der Produkte auf der Website können vom Original abweichen.

MPN bedeutet die Katalognummer des Herstellers.

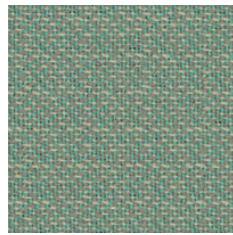
# ally SD

price group: 3

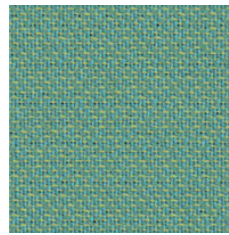
\* Standard Bejot offer  
standardowa oferta Bejot  
Bejots Standardangebot



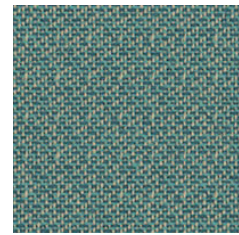
5822



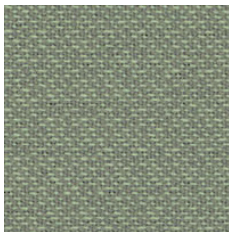
5041



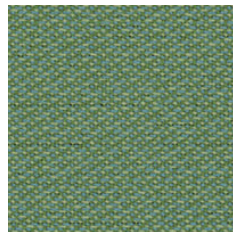
5532



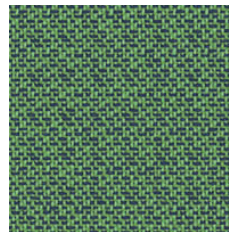
5051



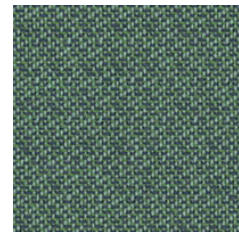
6540



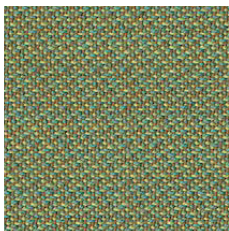
6035



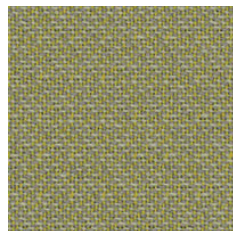
6043



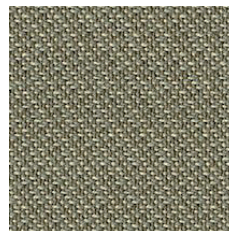
5861



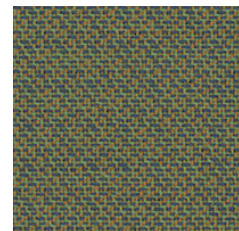
AL242\* (MPN 6242)



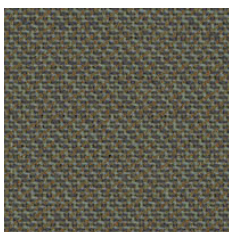
6533



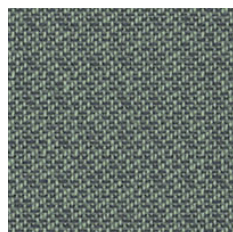
AL752\* (MPN 6752)



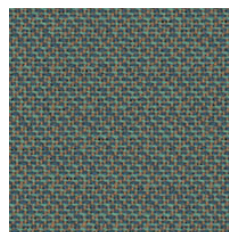
6563



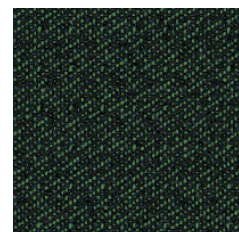
6661



6550



AL261\* (MPN 5261)



5881

Colours of products presented on this website may differ from the actual colours.

MPN stands for the manufacturer's catalog number.

Zdjęcia kolorów produktów na stronie, mogą odbiegać od rzeczywistych.

MPN oznacza numer katalogowy producenta.

Die Bildern der Farben der Produkte auf der Website können vom Original abweichen.

MPN bedeutet die Katalognummer des Herstellers.

## en:

### Composition

85% Wool, 15% Polyamid

### Weight

320 g/m<sup>2</sup> ± 5%

### Roll width

140 cm

### Abrasion resistance

100 000 Martindale cycles  
(EN ISO 12947-2)

### Pilling

4-5 (EN ISO 12945-2)

### Light fastness

5-7 (EN ISO 105-B02)

### Fastness to rubbing

Wet: ≥3-4 (EN ISO 105-X12)  
Dry: ≥4 (EN ISO 105-X12)

### Flammability

- EN 1021-1
- EN 1021-2

### Cleaning



Shade differences between individual production batches are allowed.

## pl:

### Skład

85% wełna, 15% poliamid

### Waga

320 g/m<sup>2</sup> ± 5%

### Szerokość rolki

140 cm

### Odporność na ścieranie

100 000 cykli Martindale'a  
(EN ISO 12947-2)

### Pilling

4-5 (EN ISO 12945-2)

### Odporność na światło

5-7 (EN ISO 105-B02)

### Odporność koloru na tarcie

Mokre: ≥3-4 (EN ISO 105-X12)  
Suche: ≥4 (EN ISO 105-X12)

### Certyfikaty trudnopalności

- EN 1021-1
- EN 1021-2

### Czyszczenie



Dopuszcza się występowanie różnic odcieni pomiędzy poszczególnymi partiami produkcyjnymi.

## de:

### Zusammensetzung

85% Wolle, 15% Polyamid

### Gewicht

320 g/m<sup>2</sup> ± 5%

### Rollenbreite

140 cm

### Scheuerfestigkeit

100 000 Zyklen Martindale  
(EN ISO 12947-2)

### Pilling

4-5 (EN ISO 12945-2)

### Lichtechtheit

5-7 (EN ISO 105-B02)

### Reibechtheit

Nass: ≥3-4 (EN ISO 105-X12)  
Trocken: ≥4 (EN ISO 105-X12)

### Feuersicherung

- EN 1021-1
- EN 1021-2

### Reinigung



Farbtonunterschiede zwischen einzelnen Produktionschargen sind zulässig.

# alpha SD

price group: 3

\* Standard Bejot offer  
standardowa oferta Bejot  
Bejots Standardangebot



AP003



AP004\*



AP005



AP002\*



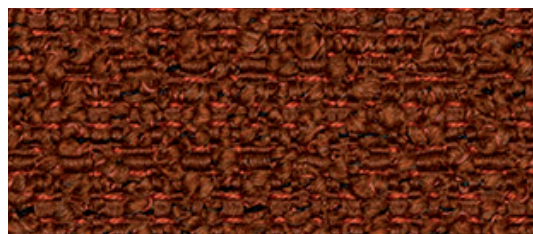
AP005\*



AP001\*



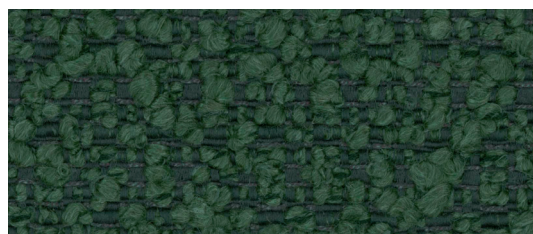
AP006\*



AP012



AP009



AP008

Colours of products presented on this website may differ from the actual colours.

Zajęcia kolorów produktów na stronie, mogą odbiegać od rzeczywistych.

Die Bildern der Farben der Produkte auf der Website können vom Original abweichen.

## en:

### Composition

95% Polyester, 5% Acrylic

### Weight

550 g/m<sup>2</sup> ± 5%

### Roll width

140 cm

### Abrasion resistance

>50 000 Martindale cycles  
(EN ISO 12947-2)

### Pilling

4 (UNI EN ISO 12945-2)

### Light fastness

4-5 (EN ISO 105-B02)

### Fastness to rubbing

Wet: 4-5 (ISO 105-X12)  
Dry: 4-5 (ISO 105-X12)

### Cleaning



Shade differences between individual production batches are allowed.

## pl:

### Skład

95% poliester, 5% akryl

### Waga

550 g/m<sup>2</sup> ± 5%

### Szerokość rolki

140 cm

### Odporność na ścieranie

>50 000 cykli Martindale'a  
(EN ISO 12947-2)

### Piling

4 (UNI EN ISO 12945-2)

### Odporność na światło

4-5 (EN ISO 105-B02)

### Odporność koloru na tarcie

Mokre: 4-5 (ISO 105-X12)  
Suche: 4-5 (ISO 105-X12)

### Czyszczenie



Dopuszcza się występowanie różnic odcieni pomiędzy poszczególnymi partiami produkcyjnymi.

## de:

### Zusammensetzung

95% Polyester, 5% Acryl

### Gewicht

550 g/m<sup>2</sup> ± 5%

### Rollenbreite

140 cm

### Scheuerfestigkeit

>50 000 cykli Martindale'a  
(EN ISO 12947-2)

### Pilling

4 (UNI EN ISO 12945-2)

### Lichtechtheit

4-5 (EN ISO 105-B02)

### Reibechtheit

Nass: 4-5 (ISO 105-X12)  
Trocken: 4-5 (ISO 105-X12)

### Reinigung

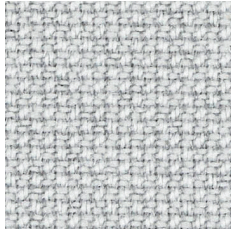


Farbtonunterschiede zwischen einzelnen Produktionschargen sind zulässig.

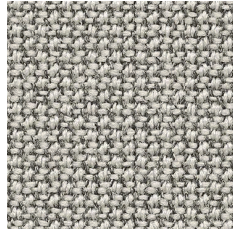
# cura SD

price group: 3

\* Standard Bejot offer  
standardowa oferta Bejot  
Bejots Standardangebot



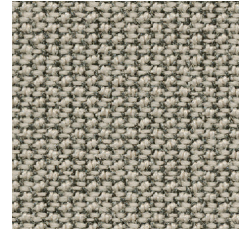
60000



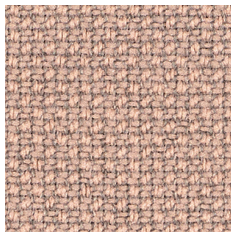
CR012\* (MPN 60112)



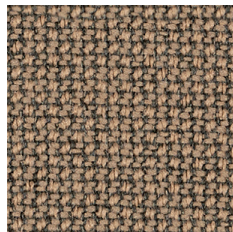
61232



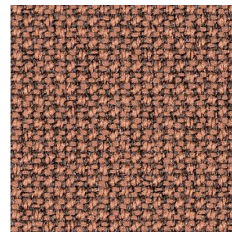
CR168\* (MPN 61168)



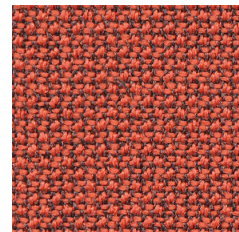
64240



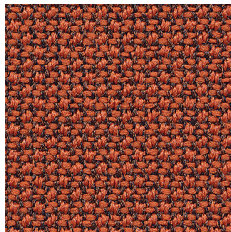
CR133\* (MPN 61233)



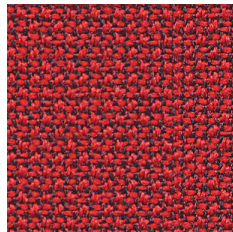
CR157\* (MPN 61257)



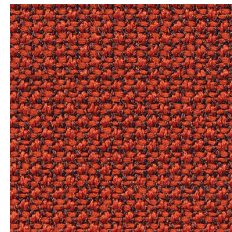
64197



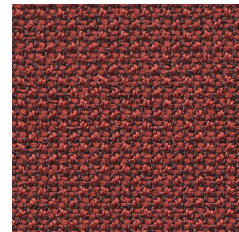
63078



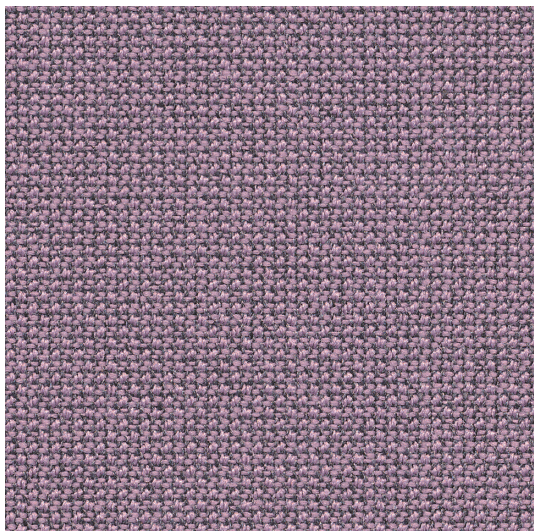
64013



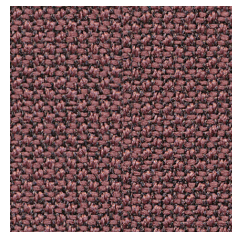
63012



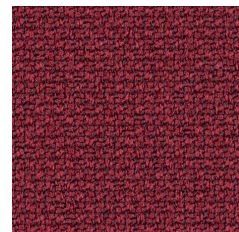
64196



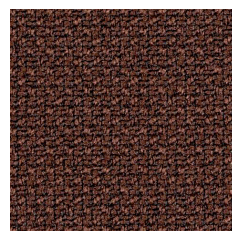
64194



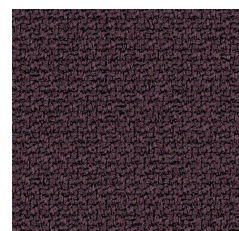
64195



64252



CR158\* (MPN 61258)



65137

Colours of products presented on this website may differ from the actual colours.  
MPN stands for the manufacturer's catalog number.

Zdjęcia kolorów produktów na stronie, mogą odbiegać od rzeczywistych.  
MPN oznacza numer katalogowy producenta.

Die Bildern der Farben der Produkte auf der Website können vom Original abweichen.  
MPN bedeutet die Katalognummer des Herstellers.

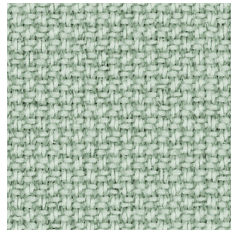
# cura SD

price group: 3

\* Standard Bejot offer  
standardowa oferta Bejot  
Bejots Standardangebot



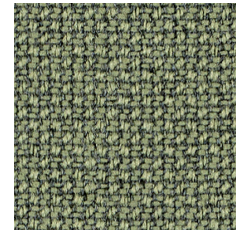
62125



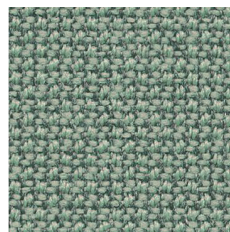
68262



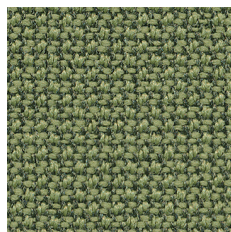
62126



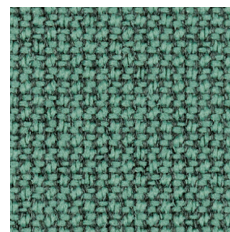
68261



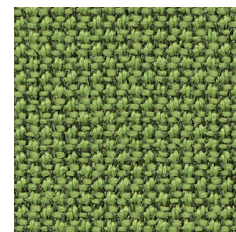
CR886\* (MPN 68186)



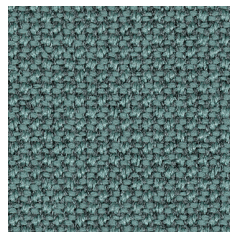
68181



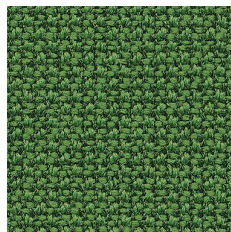
68263



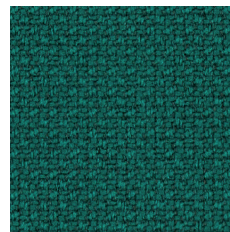
68180



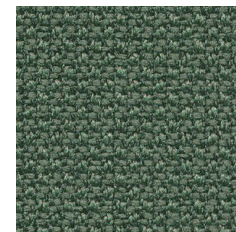
68187



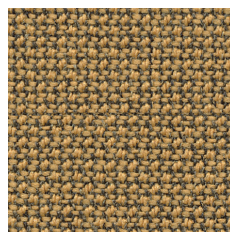
68183



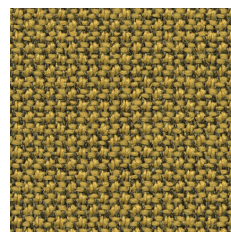
68264



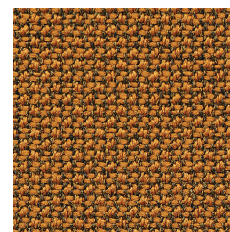
CR882\* (MPN 68182)



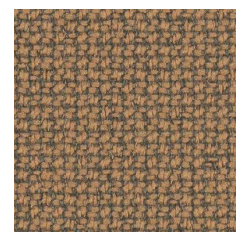
62083



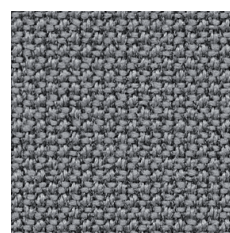
62084



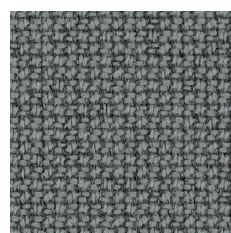
62082



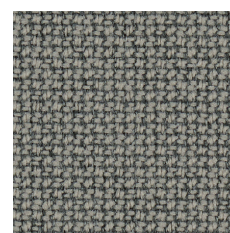
CR160\* (MPN 61260)



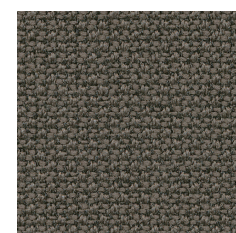
60110



60327



61259



CR169\* (MPN 61169)

Colours of products presented on this website may differ from the actual colours.

MPN stands for the manufacturer's catalog number.

Zdjęcia kolorów produktów na stronie, mogą odbiegać od rzeczywistych.

MPN oznacza numer katalogowy producenta.

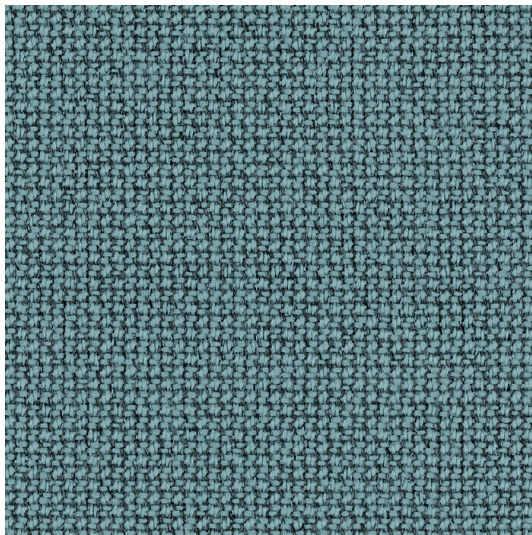
Die Bildern der Farben der Produkte auf der Website können vom Original abweichen.

MPN bedeutet die Katalognummer des Herstellers.

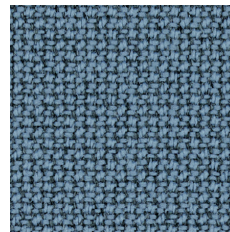
# cura SD

price group: 3

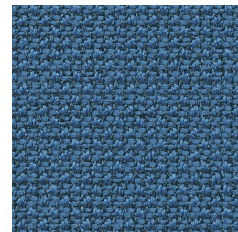
\* Standard Bejot offer  
standardowa oferta Bejot  
Bejots Standardangebot



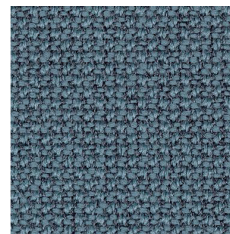
66240



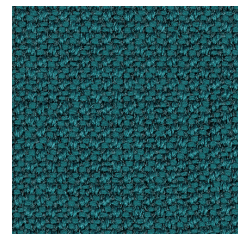
66239



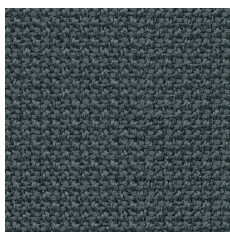
65105



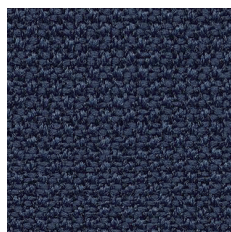
CR667\* (MPN 66167)



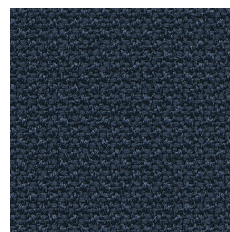
67084



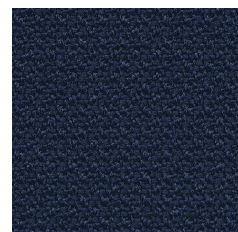
66166



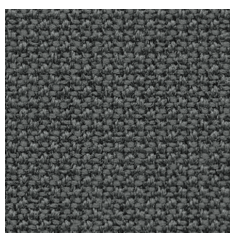
CR670\* (MPN 66170)



66165



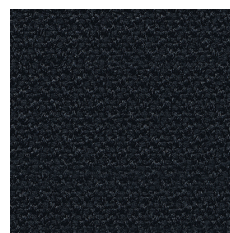
66169



CR009 (MPN 60109)



60019



60111



CR099 (MPN 60999)

Colours of products presented on this website may differ from the actual colours.

MPN stands for the manufacturer's catalog number.

Zdjęcia kolorów produktów na stronie, mogą odbiegać od rzeczywistych.

MPN oznacza numer katalogowy producenta.

Die Bildern der Farben der Produkte auf der Website können vom Original abweichen.

MPN bedeutet die Katalognummer des Herstellers.

## en:

### Composition

98% recycled polyester,  
2% polyester

### Weight

300 g/m<sup>2</sup> ± 5%

### Roll width

140 cm

### Abrasion resistance

100 000 Martindale cycles  
(EN ISO 12947-2)

### Pilling

4-5 (EN ISO 12945-2)

### Light fastness

5-8 (EN ISO 105-B02)

### Fastness to rubbing

Wet: 4-5 (EN ISO 105-X12)  
Dry: 4-5 (EN ISO 105-X12)

### Flammability

- BS EN 1021-1
- BS EN 1021-2

### Cleaning



Shade differences between individual production batches are allowed.

## pl:

### Skład

98% poliester pochodzący z recyklingu,  
2% poliester

### Waga

300 g/m<sup>2</sup> ± 5%

### Szerokość rolki

140 cm

### Odporność na ścieranie

100 000 cykli Martindale'a  
(EN ISO 12947-2)

### Piling

4-5 (EN ISO 12945-2)

### Odporność na światło

5-8 (EN ISO 105-B02)

### Odporność koloru na tarcie

Mokre: 4-5 (EN ISO 105-X12)  
Suche: 4-5 (EN ISO 105-X12)

### Certyfikaty trudnopalności

- BS EN 1021-1
- BS EN 1021-2

### Czyszczenie



Dopuszcza się występowanie różnic odcieni pomiędzy poszczególnymi partiami produkcyjnymi.

## de:

### Zusammensetzung

98% recycelter Polyester,  
2% Polyester

### Gewicht

300 g/m<sup>2</sup> ± 5%

### Rollenbreite

140 cm

### Scheuerfestigkeit

100 000 Zyklen Martindale  
(EN ISO 12947-2)

### Pilling

4-5 (EN ISO 12945-2)

### Lichtechtheit

5-8 (EN ISO 105-B02)

### Reibechtheit

Nass: 4-5 (EN ISO 105-X12)  
Trocken: 4-5 (EN ISO 105-X12)

### Feuersicherung

- BS EN 1021-1
- BS EN 1021-2

### Reinigung



Farbtonunterschiede zwischen einzelnen Produktionschargen sind zulässig.

# cyber SD

price group: 3



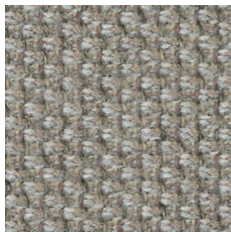
CY112 (MPN 1102)



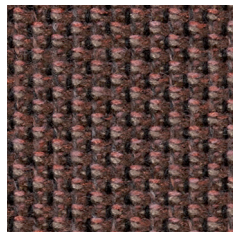
CY191 (MPN 1901)



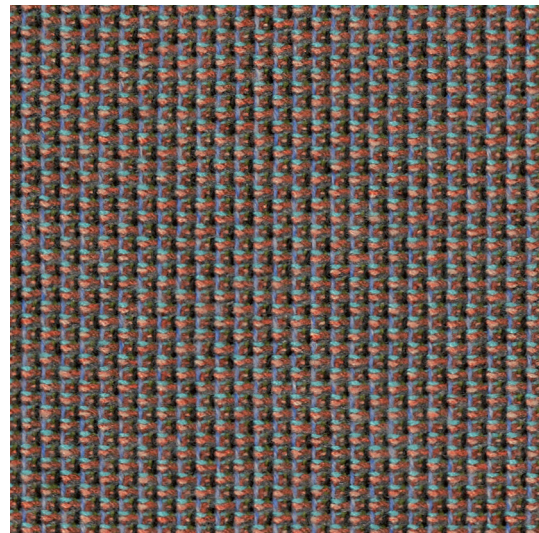
CY111 (MPN 1101)



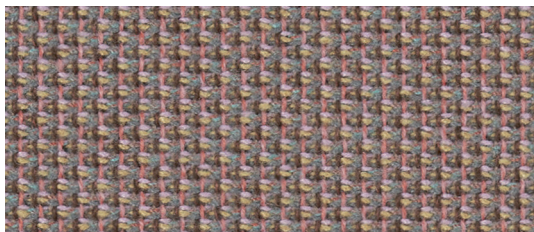
CY201 (MPN 2001)



CY271 (MPN 2701)



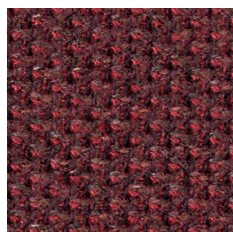
CY141 (MPN 1401)



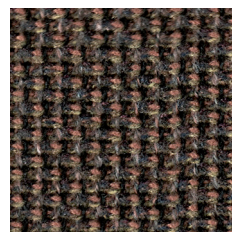
CY121 (MPN 1201)



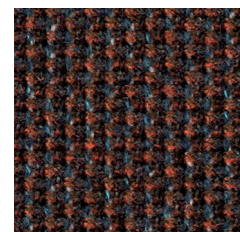
CY221 (MPN 2201)



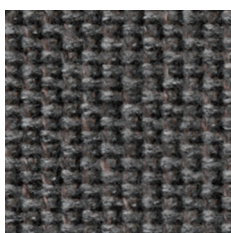
CY281 (MPN 2801)



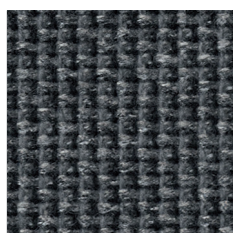
CY181 (MPN 1801)



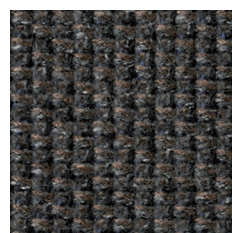
CY151 (MPN 1501)



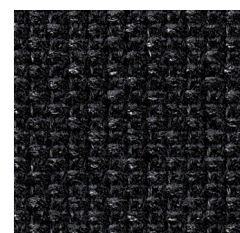
CY182 (MPN 1802)



CY291 (MPN 2901)



CY211 (MPN 2101)



CY311 (MPN 3101)

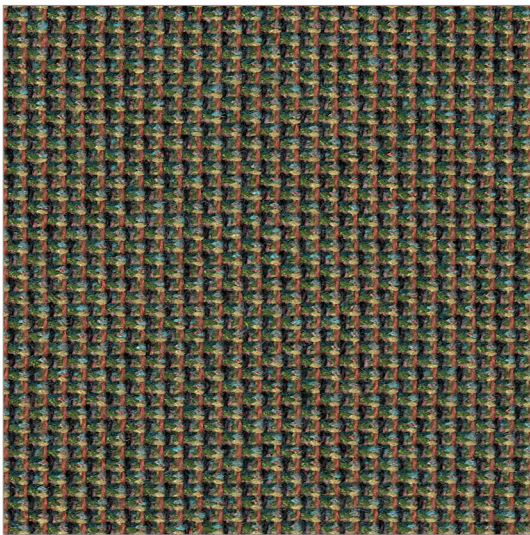
Colours of products presented on this website may differ from the actual colours.  
MPN stands for the manufacturer's catalog number.

Zdjęcia kolorów produktów na stronie, mogą odbiegać od rzeczywistych.  
MPN oznacza numer katalogowy producenta.

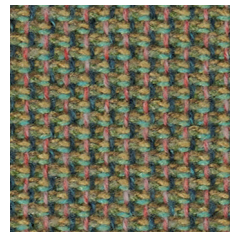
Die Bildern der Farben der Produkte auf der Website können vom Original abweichen.  
MPN bedeutet die Katalognummer des Herstellers.

# cyber SD

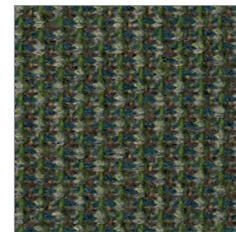
price group: 3



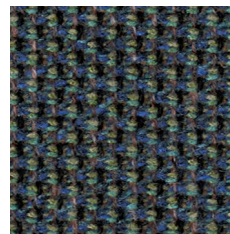
CY301 (MPN 3001)



CY171 (MPN 1701)



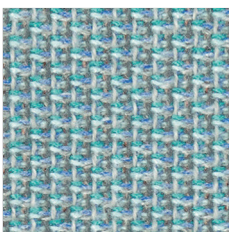
CY231 (MPN 2301)



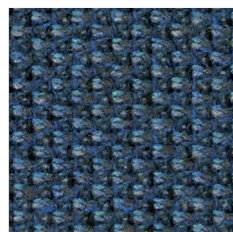
CY183 (MPN 1803)



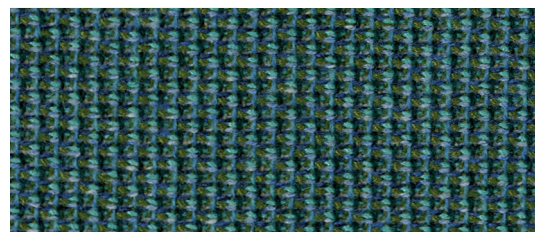
CY132 (MPN 1302)



CY241 (MPN 2401)



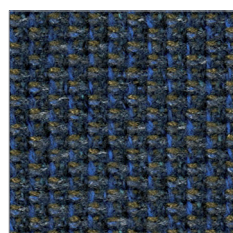
CY251 (MPN 2501)



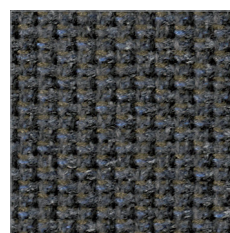
CY261 (MPN 2601)



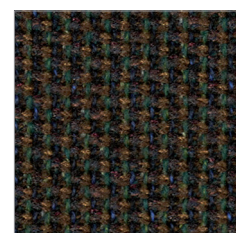
CY161 (MPN 1601)



CY252 (MPN 2502)



CY212 (MPN 2102)



CY131 (MPN 1301)

Colours of products presented on this website may differ from the actual colours.  
MPN stands for the manufacturer's catalog number.

Zdjęcia kolorów produktów na stronie, mogą odbiegać od rzeczywistych.  
MPN oznacza numer katalogowy producenta.

Die Bildern der Farben der Produkte auf der Website können vom Original abweichen.  
MPN bedeutet die Katalognummer des Herstellers.

## en:

### Composition

100% post-consumer recycled polyester

### Weight

407 g/m<sup>2</sup>

### Roll width

140 cm

### Abrasion resistance

120 000 Martindale cycles  
(EN ISO 12947-2)

### Pilling

4-5 (EN ISO 12945-2)

### Light fastness

7-8 (EN ISO 105-B02)

### Fastness to rubbing

Wet: 4-5 (ISO 105-X12)  
Dry: 4-5 (ISO 105-X12)

### Flammability

• BS EN 1021 1&2 Cigarette and Match

### Cleaning



Shade differences between individual production batches are allowed.

## pl:

### Skład

100% poliester z recyklingu postkonsumpcyjnego

### Waga

407 g/m<sup>2</sup>

### Szerokość rolki

140 cm

### Odporność na ścieranie

120 000 cykli Martindale'a  
(EN ISO 12947-2)

### Pilling

4-5 (EN ISO 12945-2)

### Odporność na światło

7-8 (ISO 105-B02)

### Odporność koloru na tarcie

Mokre: 4-5 (ISO 105-X12)  
Suche: 4-5 (ISO 105-X12)

### Certyfikaty trudnopalności

• BS EN 1021 1&2 (papieros i zapalka)

### Czyszczenie



Dopuszcza się występowanie różnic odcieni pomiędzy poszczególnymi partiami produkcyjnymi.

## de:

### Zusammensetzung

100% post-consumer recycledes Polyester

### Gewicht

407 g/m<sup>2</sup>

### Rollenbreite

140 cm

### Scheuerfestigkeit

120 000 Zyklen Martindale  
(EN ISO 12947-2)

### Pilling

4-5 (EN ISO 12945-2)

### Lichtechtheit

7-8 (ISO 105-B02:2014)

### Reibechtheit

Nass: 4-5 (ISO 105-X12)  
Trocken: 4-5 (ISO 105-X12)

### Feuersicherung

• BS EN 1021 1&2 Zigarette und Streichholz

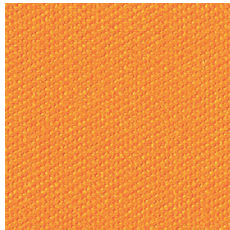
### Reinigung



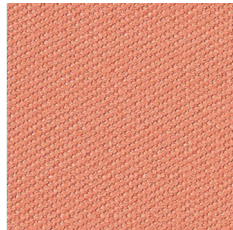
Farbtonunterschiede zwischen einzelnen Produktionschargen sind zulässig.

# easy SD

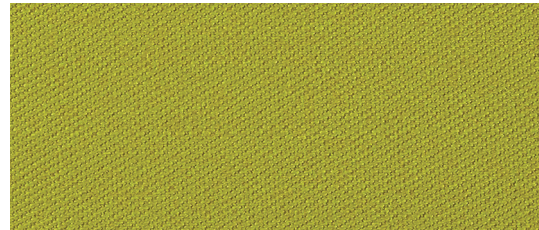
price group: 3



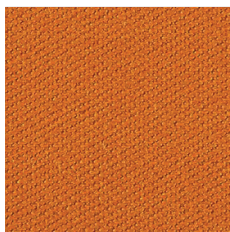
EA918



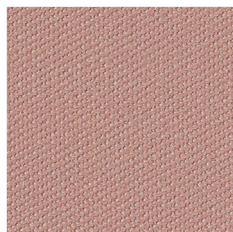
EA124



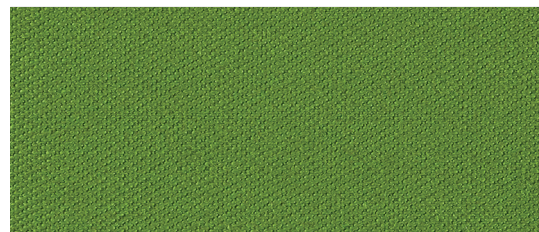
EA636



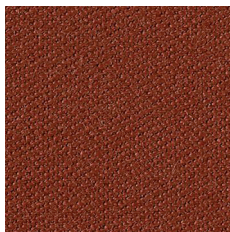
EA027



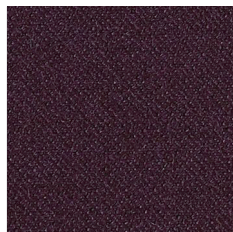
EA622



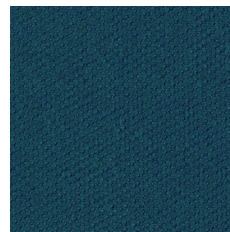
EA036



EA145



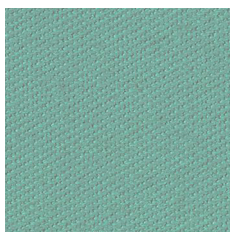
EA772



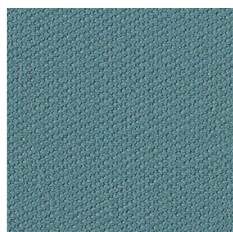
EA454



EA863



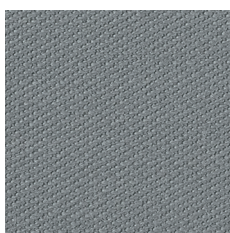
EA831



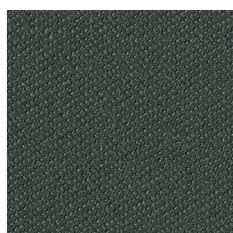
EA642



EA900



EA200



EA380

Colours of products presented on this website may differ from the actual colours.

Zajęcia kolorów produktów na stronie, mogą odbiegać od rzeczywistych.

Die Bildern der Farben der Produkte auf der Website können vom Original abweichen.

## en:

### Composition

85% wool, 15% polyamide

### Weight

330 g/m<sup>2</sup> ± 5%

### Roll width

140 cm

### Abrasion resistance

150 000 Martindale cycles  
(BS EN ISO 12947-2:2017)

### Pilling

3-4 (EN ISO 12945-2:2000)

### Light fastness

5 (BS EN ISO 105:B02:2014)

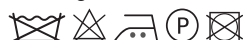
### Fastness to rubbing

Wet: 3-4 (EN ISO 105-X12:2016)  
Dry: 4 (EN ISO 105-X12:2016)

### Flammability

- EN ISO 1021 part 1&2:2014
- BS 5852:2006 crib 5
- IMO:2010 FTP code annex 1 part 8

### Cleaning



Shade differences between individual production batches are allowed.

## pl:

### Skład

85% wełna, 15% poliamid

### Waga

330 g/m<sup>2</sup> ± 5%

### Szerokość rolki

140 cm

### Odporność na ścieranie

150 000 cykli Martindale'a  
(BS EN ISO 12947-2:2017)

### Pilling

3-4 (EN ISO 12945-2:2000)

### Odporność na światło

5 (BS EN ISO 105:B02:2014)

### Odporność koloru na tarcie

Mokre: 3-4 (EN ISO 105-X12:2016)  
Suche: 4 (EN ISO 105-X12:2016)

### Certyfikaty trudnopalności

- EN ISO 1021 part 1&2:2014
- BS 5852:2006 crib 5
- IMO:2010 FTP code annex 1 part 8

### Czyszczenie



Dopuszcza się występowanie różnic odcieni pomiędzy poszczególnymi partiami produkcyjnymi.

## de:

### Zusammensetzung

85% Schurwolle, 15% Polyamid

### Gewicht

330 g/m<sup>2</sup> ± 5%

### Rollenbreite

140 cm

### Scheuerfestigkeit

150 000 Zyklen Martindale  
(BS EN ISO 12947-2:2017)

### Pilling

3-4 (EN ISO 12945-2:2000)

### Lichtechtheit

5 (BS EN ISO 105:B02:2014)

### Reibechtheit

Nass: 3-4 (EN ISO 105-X12:2016)  
Trocken: 4 (EN ISO 105-X12:2016)

### Feuersicherung

- EN ISO 1021 part 1&2:2014
- BS 5852:2006 crib 5
- IMO:2010 FTP code annex 1 part 8

### Reinigung

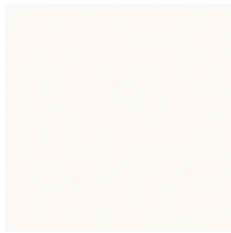


Farbtonunterschiede zwischen einzelnen Produktionschargen sind zulässig.

# silvertex SD

price group: 3

\* Standard Bejot offer  
standardowa oferta Bejot  
Bejots Standardangebot



SV289\* (MPN 2089)



4004



2090



1077



SV001\* (MPN 0001)



0002



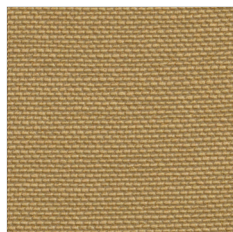
SV009\* (MPN 0009)



4012



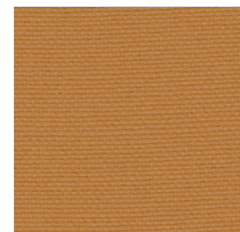
1051



1078



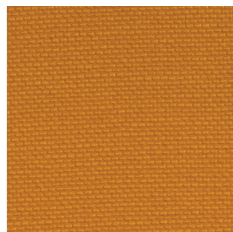
1010



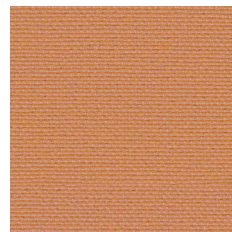
2105



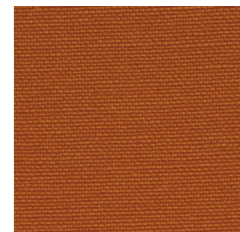
2093



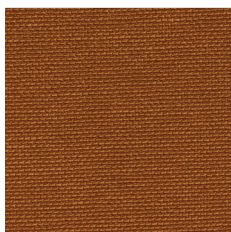
SV065\* (MPN 6065)



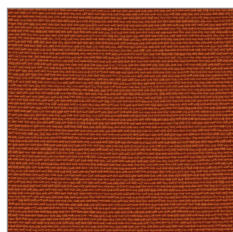
SV662\* (MPN 6062)



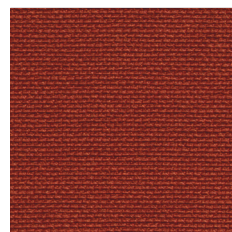
0013



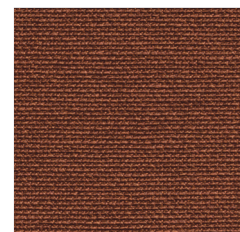
2003



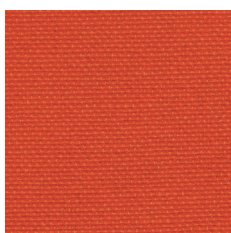
SV661\* (MPN 6061)



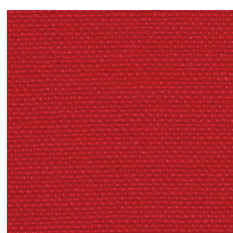
2012



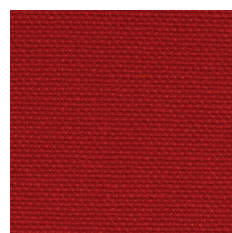
1014



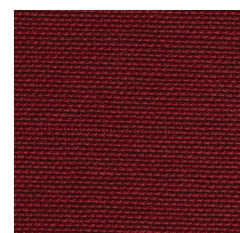
2096



2095



SV211\* (MPN 2011)



2064

Colours of products presented on this website may differ from the actual colours.

MPN stands for the manufacturer's catalog number.

Zdjęcia kolorów produktów na stronie, mogą odbiegać od rzeczywistych.

MPN oznacza numer katalogowy producenta.

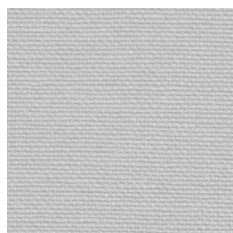
Die Bildern der Farben der Produkte auf der Website können vom Original abweichen.

MPN bedeutet die Katalognummer des Herstellers.

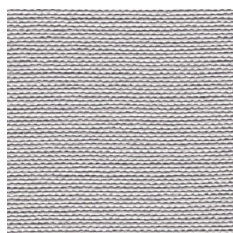
# silvertex SD

price group: 3

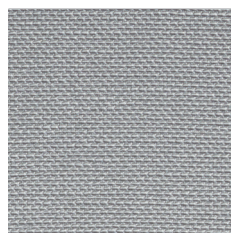
\* Standard Bejot offer  
standardowa oferta Bejot  
Bejots Standardangebot



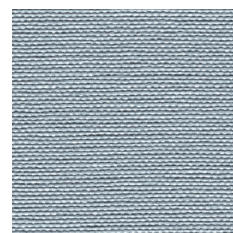
2101



5039



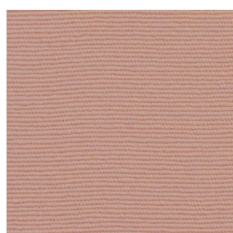
SV401\* (MPN 4001)



2318



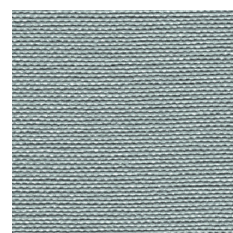
2099



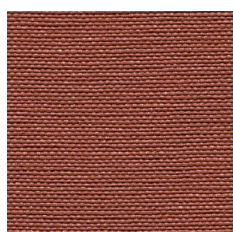
2098



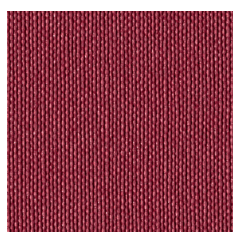
5009



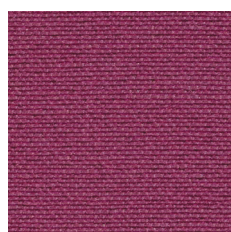
6434



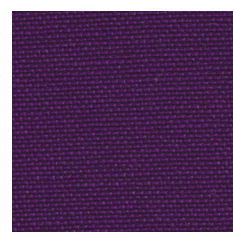
9243



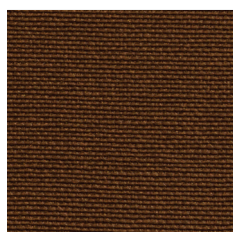
7251



2097



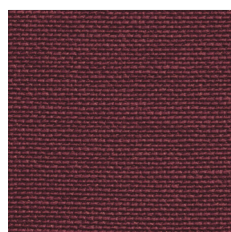
7001



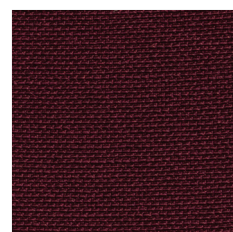
0073



SV424\* (MPN 4024)



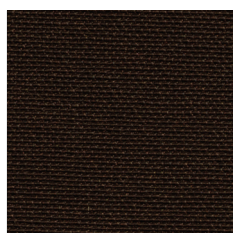
2016



SV064\* (MPN 2064)



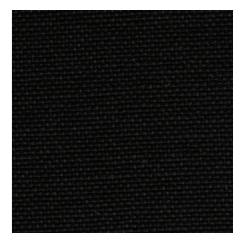
4003



0005



9002



SV091\* (MPN 9001)

Colours of products presented on this website may differ from the actual colours.

MPN stands for the manufacturer's catalog number.

Zdjęcia kolorów produktów na stronie, mogą odbiegać od rzeczywistych.

MPN oznacza numer katalogowy producenta.

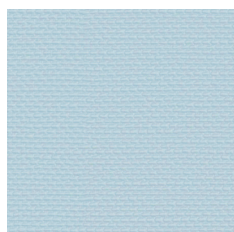
Die Bildern der Farben der Produkte auf der Website können vom Original abweichen.

MPN bedeutet die Katalognummer des Herstellers.

# silvertex SD

\* Standard Bejot offer  
standardowa oferta Bejot  
Bejots Standardangebot

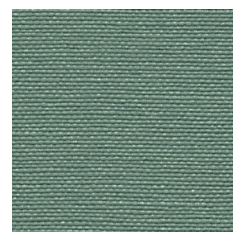
price group: 3



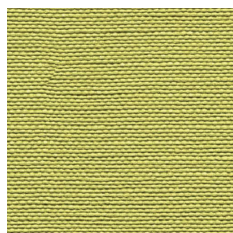
SV213\* (MPN 2103)



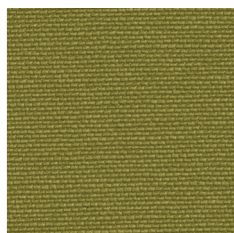
2102



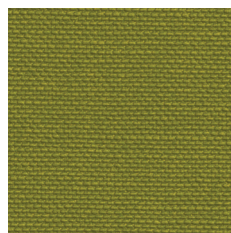
5444



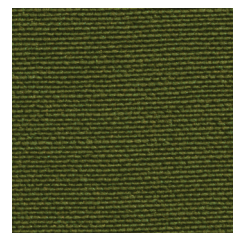
2092



5019



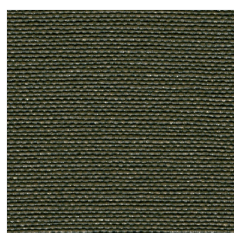
SV508\* (MPN 5008)



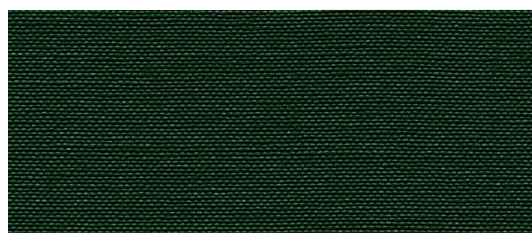
SV010\* (MPN 5020)



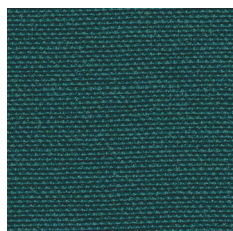
5010



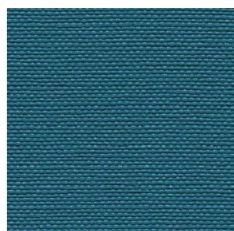
5468



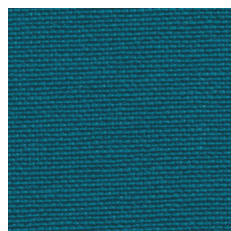
SV563\* (MPN 5063)



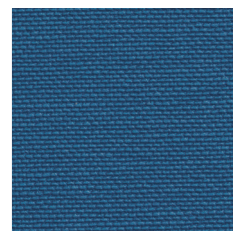
2100



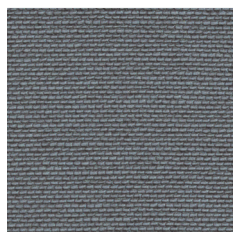
3352



SV031\* (MPN 3001)



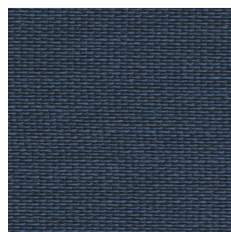
3066



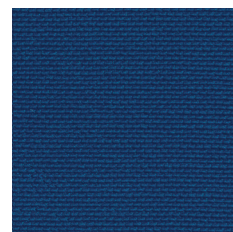
4011



2094



SV307\* (MPN 3007)



SV067\* (MPN 3067)



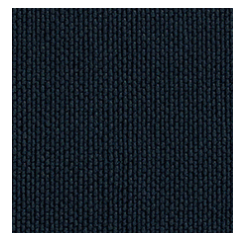
4010



SV402\* (MPN 4002)



3375



3068

Colours of products presented on this website may differ from the actual colours.

MPN stands for the manufacturer's catalog number.

Zdjęcia kolorów produktów na stronie, mogą odbiegać od rzeczywistych.

MPN oznacza numer katalogowy producenta.

Die Bildern der Farben der Produkte auf der Website können vom Original abweichen.

MPN bedeutet die Katalognummer des Herstellers.



**odporna na ścieranie**  
exzellente Abriebfestigkeit  
abrasion resistant



**odporna na promienie UV**  
lichtechtheit  
UV resistant



**odporna na mikroorganizmy**  
antimikrobiell ausgerüstet  
mildew resistant



**wodoodporna**  
wasserabweisend  
impermeability



**odporna na produkty chemiczne**  
chemikalienbeständig  
chemical resistant



**odporna na krew i urynek**  
resistenz gegen Blut und Urin  
resistant to blood and urine



**trudnozapałna**  
flammhemmend ausgerüstet  
flame retardant



**odporna na niskie temperatury**  
kältenbruch resistent  
low temperature resistant

## pl:

PERMABLOCK to sprawdzona powłoka chroniąca winyl, która tworzy mocną i skuteczną barierę przed największymi problemami występującymi w branży hotelarskiej i służbie zdrowia.

Należy unikać olejów, tłuszczów i substancji agresywnych (np. silne domowe środki czyszczące), gdyż mogą zniszczyć powierzchnię materiału. Ich użycie może doprowadzić też do usunięcia plastyfikatorów i w rezultacie do stwardnienia i skruszenia materiału.

Barwniki i pigmenty mogą trwale zabarwiać winyl. W szczególności materiały tekstylne (np. jeansy, kamizelki czy paski), mogą zawierać silne pigmenty których po migracji nie można całkowicie usunąć.

**Powłoka**  
100% Winył

**Nośnik**  
100% Poliester Hi-Loft 2™

**Waga**  
685 g/m<sup>2</sup>

**Szerokość rolki**  
137 cm

**Odporność na ścieranie**  
300 000 cykli Martindale'a  
(EN ISO 12947-2:1999)

**Odporność na światło**  
Xenontest (DIN 54004)-7

**Trudnozapałność**

- EN 1021 Part 1 & 2: 2015
- EN 71-2:2006+A1:2007
- DIN 4102 B2
- UNI 9175 (1987) / UNI 9175/FA1 (1994) Classe 1.IM
- (MED) Council Directive 96/98 EC on marine equipment
- IMO A 652 (16) Annex I, 8,2 and 8,3

**Inne**

- EN 71-3:2006+A1:2007

**Czyszczenie**



Dopuszcza się występowanie różnic odcieni pomiędzy poszczególnymi partiami produkcyjnymi.

## de:

PERMABLOCK ist geprüfte Schutzschicht, die eine starke und effektive Barriere gegen die wichtigsten Probleme in der Hotelbranche und Krankenhauswesen ausmacht.

Man sollte Öle und starke Reinigungsmittel vermeiden. Sie können die Oberfläche des Stoffes beschädigen. Diese Beschädigung kann Entfernen von Weichmachern verursachen und zu Verhärtung des Stoffes führen.

Farbstoffe und Pigmente können Vinyl verfärben, insbesondere Textilien, die starke Pigmente beinhalten (wie Jeanshosen, Westen, Gürtel), welche völlig nicht entfernt werden können.

**Oberfläche**  
100% Vinyl

**Vinyl Träger**  
100% Polyester Hi-Loft 2™

**Gewicht**  
685 g/m<sup>2</sup>

**Rollenbreite**  
137 cm

**Scheuerfestigkeit**  
300 000 Zyklen Martindale  
(EN ISO 12947-2:1999)

**Lichtechtheit**  
Xenontest (DIN 54004)-7

**Feuersicherung**

- EN 1021 Part 1 & 2: 2015
- EN 71-2:2006+A1:2007
- DIN 4102 B2
- UNI 9175 (1987) / UNI 9175/FA1 (1994) Classe 1.IM
- (MED) Council Directive 96/98 EC on marine equipment
- IMO A 652 (16) Annex I, 8,2 and 8,3

**Andere**

- EN 71-3:2006+A1:2007

**Reinigung**



Farbtonunterschiede zwischen einzelnen Produktionschargen sind zulässig.

## en:

PERMABLOCK is proven vinyl protective coating, engineered to create a tough effective barrier against the biggest problems encountered in contract, healthcare and hospitality environments.

Avoid contact with oils, fats or aggressive substances (e.g. strong household cleaners). These may damage the surface may lead to the extraction of plasticizers and consequently a rigidification of the material.

Dyestuffs and colorant may discolor vinyl. Especially textiles can contain strong colorants (e.g. jeans, jackets or belts) which possibly cannot be removed completely.

**Surface**  
100% Vinyl

**Vinyl Backing**  
100% Polyester Hi-Loft 2™

**Weight**  
685 g/m<sup>2</sup>

**Roll width**  
137 cm

**Fastness to Rubbing**  
300 000 Martindale cycles  
(EN ISO 12947-2:1999)

**Light Fastness**  
Xenontest (DIN 54004)-7

**Flammability**

- EN 1021 Part 1 & 2: 2015
- EN 71-2:2006+A1:2007
- DIN 4102 B2
- UNI 9175 (1987) / UNI 9175/FA1 (1994) Classe 1.IM
- (MED) Council Directive 96/98 EC on marine equipment
- IMO A 652 (16) Annex I, 8,2 and 8,3

**Other**

- EN 71-3:2006+A1:2007

**Cleaning**

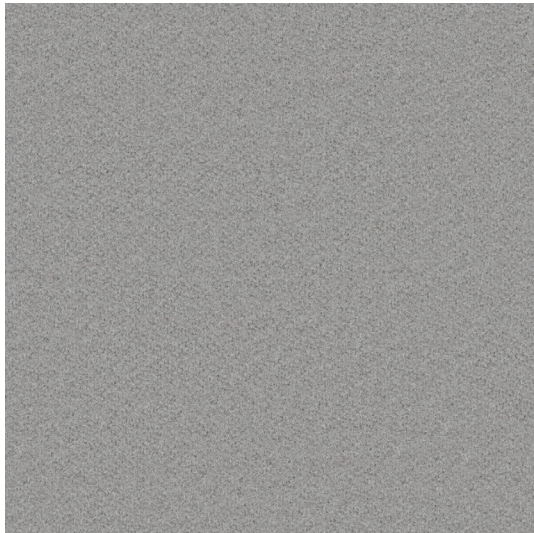


Shade differences between individual production batches are allowed.

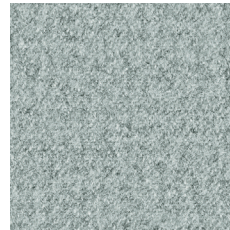
# synergy SD

price group: 3

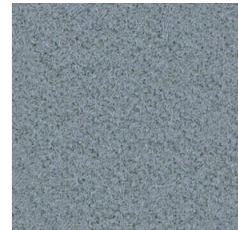
\* Standard Bejot offer  
standardowa oferta Bejot  
Bejots Standardangebot



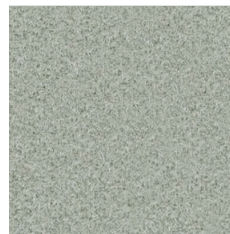
LDS20



LDS08\*



LDS21\*



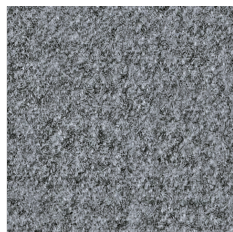
LDS19



LDS32



LDS31



LDS16\*



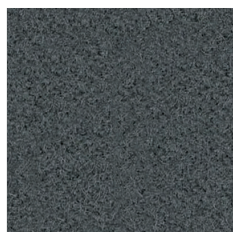
LDS24



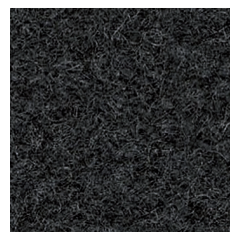
LDS33



LDS35\*



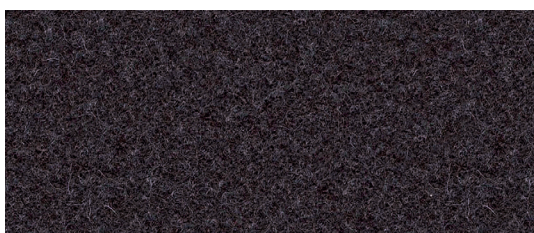
LDS29



LDS17\*



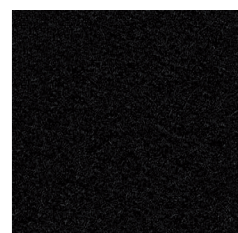
LDS25



LDS34



LDS26



LDS27

Zajęcia kolorów produktów na stronie,  
mogą odbiegać od rzeczywistych.

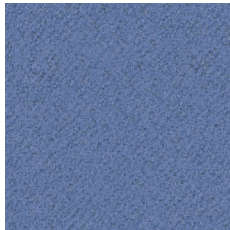
Colours of products presented on this  
website may differ from the actual colours.

Die Bildern der Farben der Produkte auf der  
Website können vom Original abweichen.

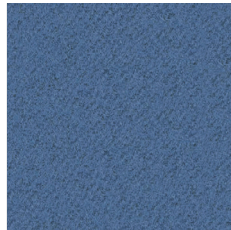
# synergy SD

price group: 3

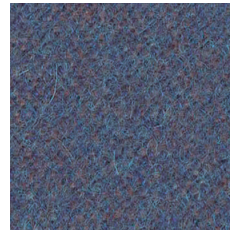
\* Standard Bejot offer  
standardowa oferta Bejot  
Bejots Standardangebot



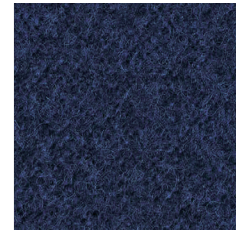
LDS65



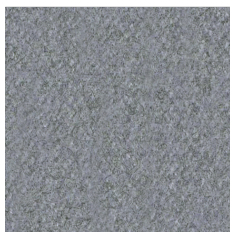
LDS63\*



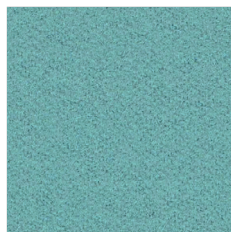
LDS64



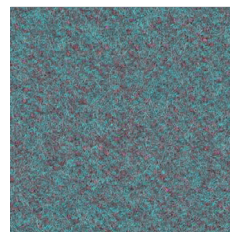
LDS62\*



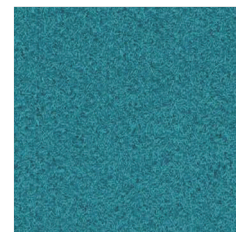
LDS05



LDS55\*



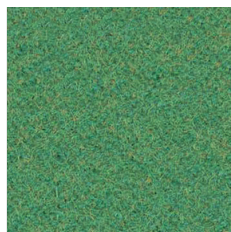
LDS56\*



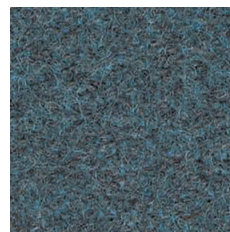
LDS57\*



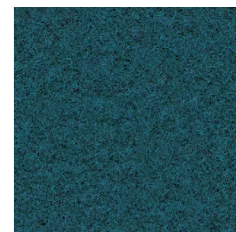
LDS54



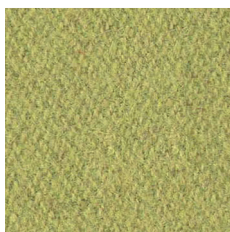
LDS53



LDS58



LDS59\*



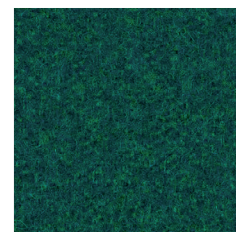
LDS46\*



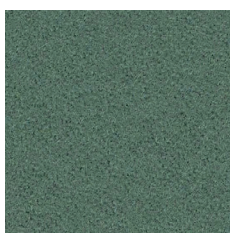
LDS47\*



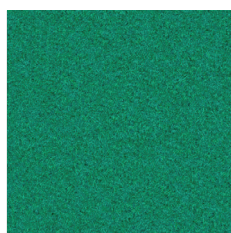
LDS48



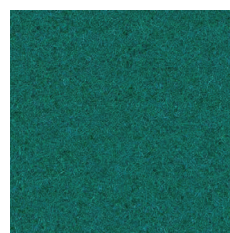
LDS50



LDS49



LDS52



LDS51



LDS42

Zajęcia kolorów produktów na stronie,  
mogą odbiegać od rzeczywistych.

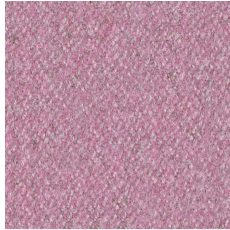
Colours of products presented on this  
website may differ from the actual colours.

Die Bildern der Farben der Produkte auf der  
Website können vom Original abweichen.

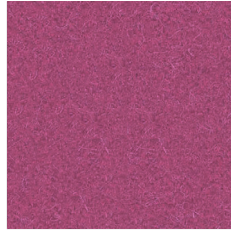
# synergy SD

price group: 3

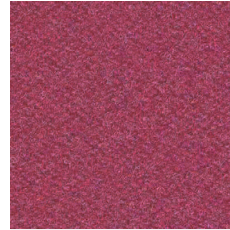
\* Standard Bejot offer  
standardowa oferta Bejot  
Bejots Standardangebot



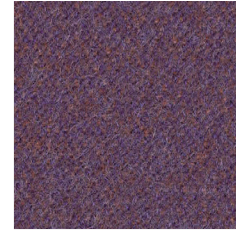
LDS07



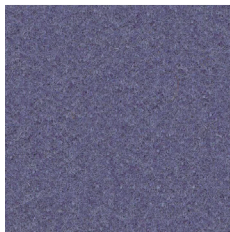
LDS72



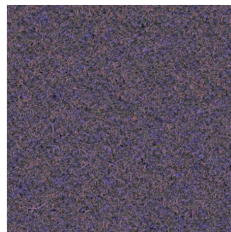
LDS36



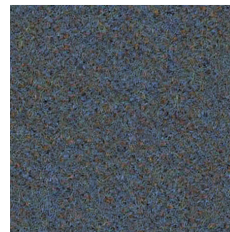
LDS66



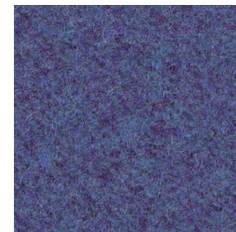
LDS67



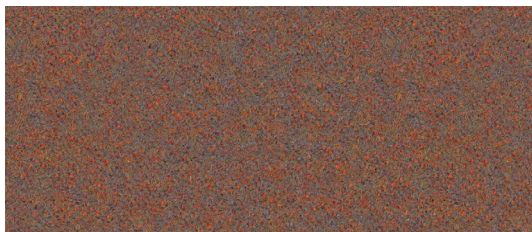
LDS70



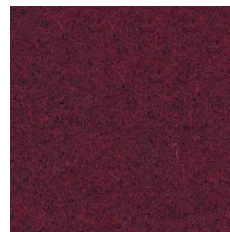
LDS38



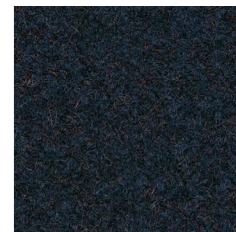
LDS68



LDS76



LDS87



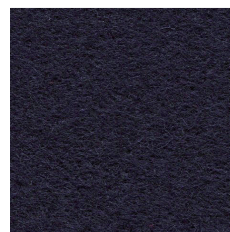
LDS60



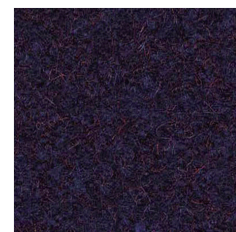
LDS78



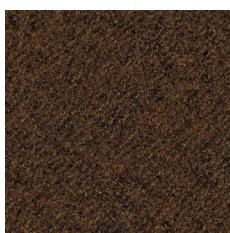
LDS79



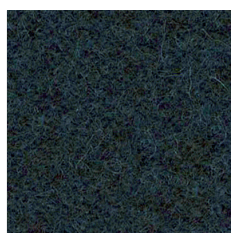
LDS69



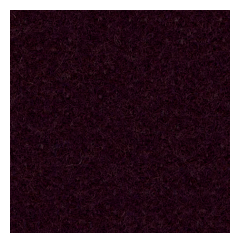
LDS61



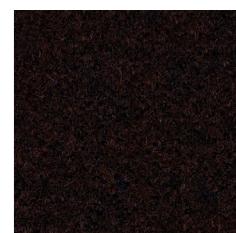
LDS39



LDS41



LDS88



LDS40

Zajęcia kolorów produktów na stronie,  
mogą odbiegać od rzeczywistych.

Colours of products presented on this  
website may differ from the actual colours.

Die Bildern der Farben der Produkte auf der  
Website können vom Original abweichen.

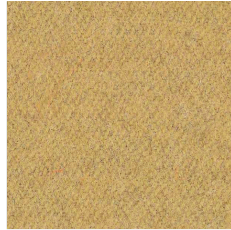
# synergy SD

price group: 3

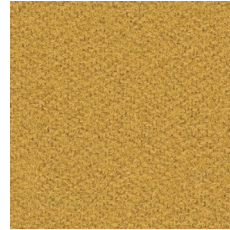
\* Standard Bejot offer  
standardowa oferta Bejot  
Bejots Standardangebot



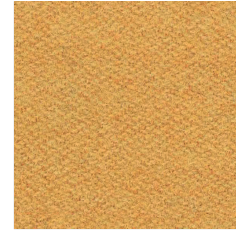
LDS23



LDS45



LDS28\*



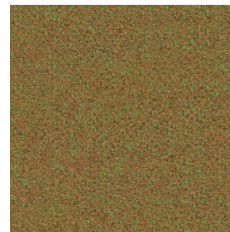
LDS44\*



LDS18



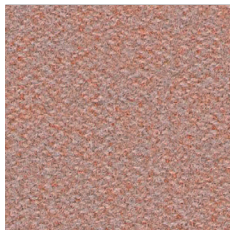
LDS22



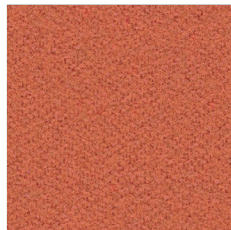
LDS43



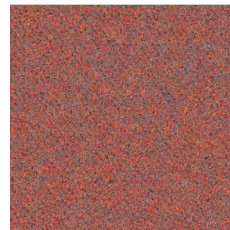
LDS37



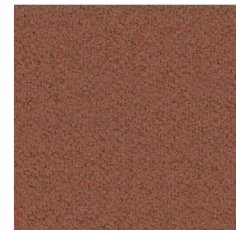
LDS74



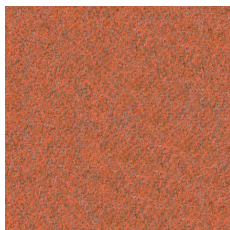
LDS75



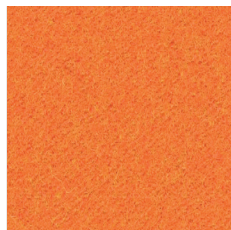
LDS73



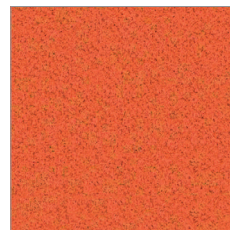
LDS77



LDS83



LDS80\*



LDS81\*



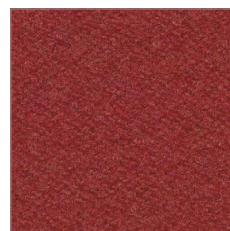
LDS84



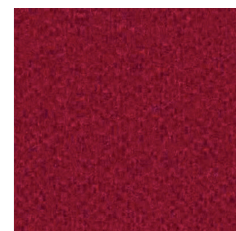
LDS71



LDS80\*



LDS85\*



LDS86\*

Zajęcia kolorów produktów na stronie,  
mogą odbiegać od rzeczywistych.

Colours of products presented on this  
website may differ from the actual colours.

Die Bildern der Farben der Produkte auf der  
Website können vom Original abweichen.

## pl:

### Skład

95% wełna, 5% poliamid

### Waga

400 g/m<sup>2</sup> ± 5%

### Szerokość rolki

140 cm minimum

### Odporność na ścieranie

100 000 cykli Martindale'a  
(BS EN ISO 12947-2:2016)

### Pilling

4 (BS EN ISO 12945-2:2000)

### Odporność na światło

5 (BS EN ISO 105-B02:2014-BS6)

### Odporność koloru na tarcie

Mokre: 4 (UNI EN ISO 105-X12)  
Suche: 4 (UNI EN ISO 105-X12)

### Certyfikaty trudnopalności

- BS EN 1021-1:2014
- BS EN 1021-2:2014
- BS 7176 Low Hazard
- UNI 9175:2010 Class 1 IM
- ÖNORM B 3825 & A 3800-1

### Czyszczenie

na sucho

Dopuszcza się występowanie różnic odcieni pomiędzy poszczególnymi partiami produkcyjnymi.

## de:

### Zusammensetzung

95% Schurwolle, 5% Polyamid

### Gewicht

400 g/m<sup>2</sup> ± 5%

### Rollenbreite

140 cm minimum

### Scheuerfestigkeit

100 000 Zyklen Martindale  
(BS EN ISO 12947-2:2016)

### Pilling

4 (BS EN ISO 12945-2:2000)

### Lichtechtheit

5 (BS EN ISO 105-B02:2014-BS6)

### Reibechtheit

Nass: 4 (UNI EN ISO 105-X12)  
Trocken: 4 (UNI EN ISO 105-X12)

### Feuersicherung

- BS EN 1021-1:2014
- BS EN 1021-2:2014
- BS 7176 Low Hazard
- UNI 9175:2010 Class 1 IM
- ÖNORM B 3825 & A 3800-1

### Reinigung

Trockenreinigung

Farbtonunterschiede zwischen einzelnen Produktionschargen sind zulässig.

## en:

### Composition

95% virgin wool, 5% polyamide

### Weight

400 g/m<sup>2</sup> ± 5%

### Roll width

140 cm minimum

### Abrasion resistance

100 000 Martindale cycles  
(BS EN ISO 12947-2:2016)

### Pilling

4 (BS EN ISO 12945-2:2000)

### Light fastness

5 (BS EN ISO 105-B02:2014-BS6)

### Fastness to rubbing

Wet: 4 (UNI EN ISO 105-X12)  
Dry: 4 (UNI EN ISO 105-X12)

### Flammability

- BS EN 1021-1:2014
- BS EN 1021-2:2014
- BS 7176 Low Hazard
- UNI 9175:2010 Class 1 IM
- ÖNORM B 3825 & A 3800-1

### Cleaning

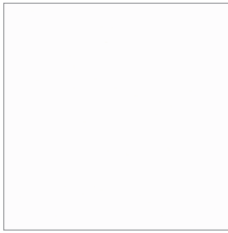
dry cleaning

Shade differences between individual production batches are allowed.

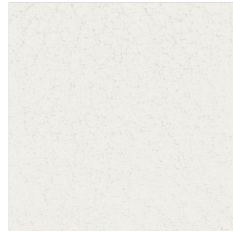
# valencia SD

price group: 3

\* Standard Bejot offer  
standardowa oferta Bejot  
Bejots Standardangebot



VL 9607 (pure white)



VL 8020 (pearlescence)



VL 8032 (weiss)



VL 1048 (sisal)



VL 440\* (auster)



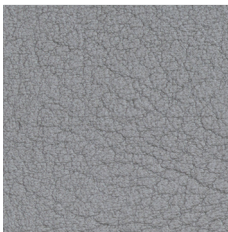
VL 1020 (ivory)



VL 2113 (lotus)



VL 2114 (rosé)



VL 4020 (silver)



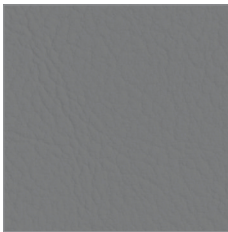
VL 444\* (warm grey)



VL 1049 (leinen)



VL 1050 (beige)



VL 445\* (perle)



VL 2008 (everest)



VL 2116 (camel)



VL 1001 (champagne)



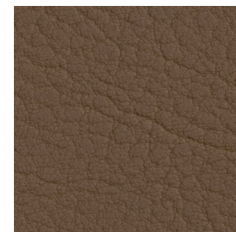
VL 4002 (laurel)



VL 2522 (fungi)



VL 0034 (taupe)



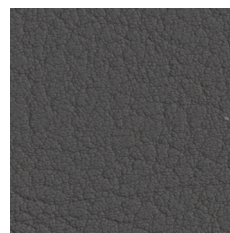
VL 0002 (cognac)



VL 9001 (sumatra)



VL 4001 (mushroom)



VL 5002 (moss)



VL 0033 (buche)

Zdjęcia kolorów produktów na stronie,  
mogą odbiegać od rzeczywistych.

Colours of products presented on this  
website may differ from the actual colours.

Die Bildern der Farben der Produkte auf der  
Website können vom Original abweichen.

# valencia SD

price group: 3

\* Standard Bejot offer  
standardowa oferta Bejot  
Bejots Standardangebot



VL 2020 (sonne)



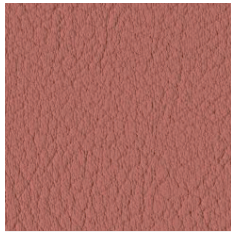
VL 211\* (squash)



VL 6012 (safran)



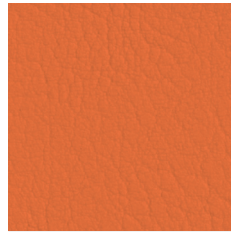
VL 217\* (cashmere)



VL 9245 (peach)



VL 6013 (melone)



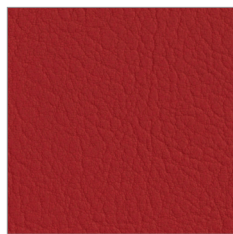
VL 619\* (orange)



VL 6003 (nectarine)



VL 2021 (pink)



VL 275\* (rot)



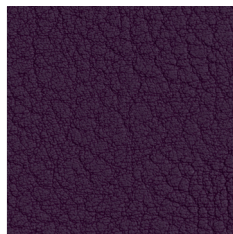
VL 2112 (tomato)



VL 2074 (kirsche)



VL 2002 (berry)



VL 7001 (amethyst)



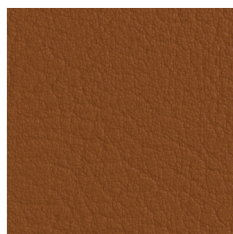
VL 262\* (port)



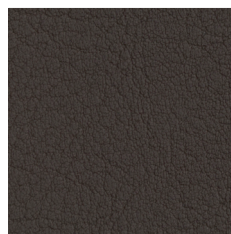
VL 2001 (merlot)



VL 2115 (chestnut)



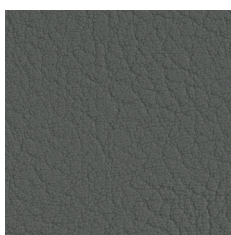
VL 0035 (terracotta)



VL 4041 (meteor)



VL 020\* (mocca)



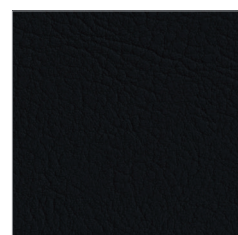
VL 4052 (lichtgrau)



VL 403\* (graphite)



VL 0001 (praliné)



VL 935\* (schwarz)

Zajęcia kolorów produktów na stronie,  
mogą odbiegać od rzeczywistych.

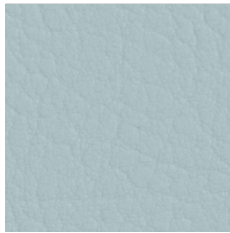
Colours of products presented on this  
website may differ from the actual colours.

Die Bildern der Farben der Produkte auf der  
Website können vom Original abweichen.

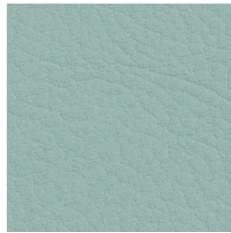
# valencia SD

\* Standard Bejot offer  
standardowa oferta Bejot  
Bejots Standardangebot

price group: 3



VL 207\* (skylight)



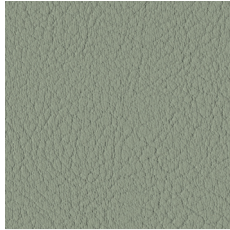
VL 2106 (coral)



VL 5032 (cloud)



VL 8415 (misty)



VL 8438 (cactus)



VL 6438 (eucalyptus)



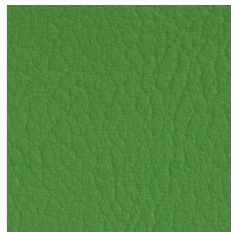
VL 5451 (pine)



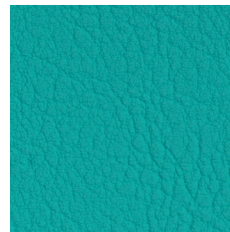
VL 501\* (olive)



VL 2110 (avocado)



VL 5041 (apfel)



VL 5056 (jade)



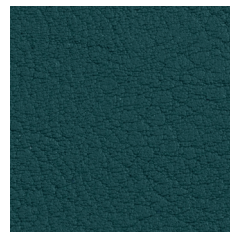
VL 5057 (türkis)



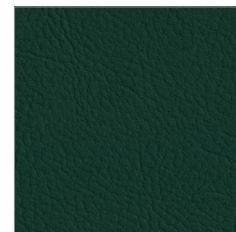
VL 369\* (baltic)



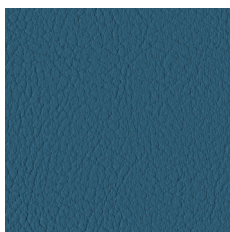
VL 3001 (lavendel)



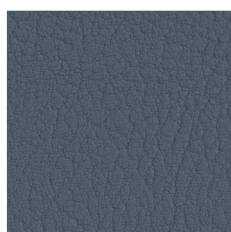
VL 2119 (teal)



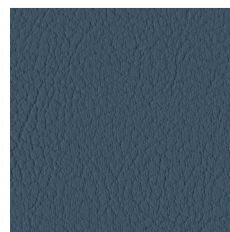
VL 569\* (grün)



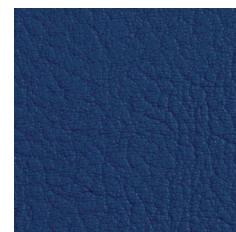
VL 0337 (scuba)



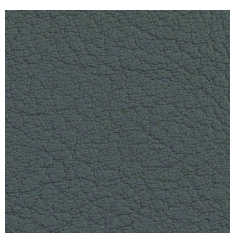
VL 4042 (titan)



VL 0370 (azure)



VL 3067 (delft)



VL 5065 (petrol)



VL 4043 (platin)



VL 2108 (night)



VL 368\* (marine)

Zajęcia kolorów produktów na stronie,  
mogą odbiegać od rzeczywistych.

Colours of products presented on this  
website may differ from the actual colours.

Die Bildern der Farben der Produkte auf der  
Website können vom Original abweichen.



**odporna na ścieranie**  
exzellente Abriebfestigkeit  
abrasion resistant



**odporna na promienie UV**  
lichtechtheit  
UV resistant



**odporna na mikroorganizmy**  
antimikrobiell ausgerüstet  
mildew resistant



**wodoodporna**  
wasserabweisend  
impermeability



**odporna na produkty chemiczne**  
chemikalienbeständig  
chemical resistant



**odporna na krew i urynę**  
resistenz gegen Blut und Urin  
resistance to blood and urine



**trudnozapałna**  
flammhemmend ausgerüstet  
flame retardant



**odporna na niskie temperatury**  
kältebruch resistent  
low temperature resistant

## pl:

PERMABLOCK to sprawdzona powłoka chroniąca winyl, która tworzy mocną i skuteczną barierę przed największymi problemami występującymi w branży hotelarskiej i służbie zdrowia.

Należy unikać olejów, tłuszczów i substancji agresywnych (np. silne domowe środki czyszczące), gdyż mogą zniszczyć powierzchnię materiału. Ich użycie może doprowadzić też do usunięcia plastyfikatorów i w rezultacie do stwardnienia i skruszenia materiału.

Barwniki i pigmenty mogą trwale zabarwiać winyl. W szczególności materiały tekstylne (np. jeansy, kamizelki czy paski), mogą zawierać silne pigmenty, których po migracji nie można całkowicie usunąć.

**Powłoka**  
100% Winył

**Nośnik**  
100% Poliester Hi-Loft 2™

**Waga**  
650 g/m<sup>2</sup>

**Szerokość rolki**  
137 cm

**Odporność na ścieranie**  
300 000 cykli Martindale'a  
(UNE EN ISO 14465:2004)  
(UNE EN ISO 12947:2 1999)

**Odporność na światło**  
4-5 (EN ISO 105-B02:2014)

**Trudnozapałność**  
• UNE EN 1021-1:2015  
• UNE EN 1021-2:2015  
• DIN 4102 B2

**Czyszczenie**



## de:

PERMABLOCK ist geprüfte Schutzschicht, die eine starke und effektive Barriere gegen die wichtigsten Probleme in der Hotelbranche und Krankenhauswesen ausmacht.

Man sollte Öle und starke Reinigungsmittel vermeiden. Sie können die Oberfläche des Stoffes beschädigen. Diese Beschädigung kann Entfernen von Weichmachern verursachen und zu Verhärtung des Stoffes führen.

Farbstoffe und Pigmente können Vinyl verfärben, insbesondere Textilien, die starke Pigmente beinhalten (wie Jeanshosen, Westen, Gürtel), welche völlig nicht entfernt werden können.

**Oberfläche**  
100% Winył

**Vinyl Träger**  
100% Poliester Hi-Loft 2™

**Gewicht**  
650 g/m<sup>2</sup>

**Rollenbreite**  
137 cm

**Scheuerfestigkeit**  
300 000 Zyklen Martindale  
(UNE EN ISO 14465:2004)  
(UNE EN ISO 12947:2 1999)

**Lichtechtheit**  
4-5 (EN ISO 105-B02:2014)

**Feuersicherung**  
• UNE EN 1021-1:2015  
• UNE EN 1021-2:2015  
• DIN 4102 B2

**Reinigung**



## en:

PERMABLOCK is proven vinyl protective coating, engineered to create a tough effective barrier against the biggest problems encountered in contract, healthcare and hospitality environments.

Avoid contact with oils, fats or aggressive substances (e.g. strong household cleaners). These may damage the surface may lead to the extraction of plasticizers and consequently a rigidification of the material.

Dyestuffs and colorant may discolor vinyl. Especially textiles can contain strong colorants (e.g. jeans, jackets or belts) which possibly cannot be removed completely.

**Surface**  
100% Vinyl

**Vinyl Backing**  
100% Polyester Hi-Loft 2™

**Weight**  
650 g/m<sup>2</sup>

**Roll width**  
137 cm

**Fastness to Rubbing**  
300 000 Martindale cycles  
(UNE EN ISO 14465:2004)  
(UNE EN ISO 12947:2 1999)

**Light Fastness**  
4-5 (EN ISO 105-B02:2014)

**Flammability**  
• UNE EN 1021-1:2015  
• UNE EN 1021-2:2015  
• DIN 4102 B2

**Cleaning**



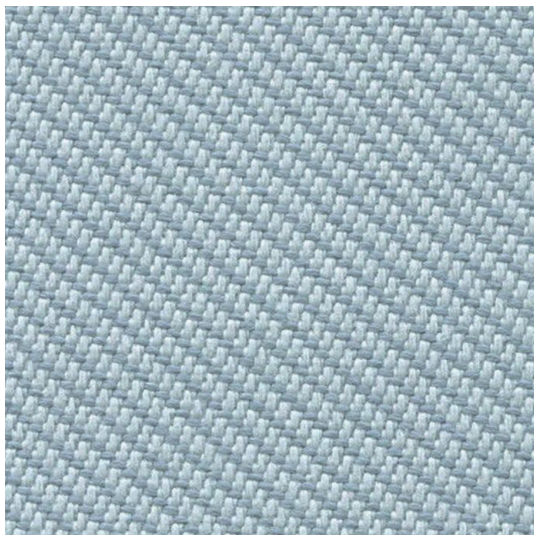


grupa cenowa    Preicegruppe    price group

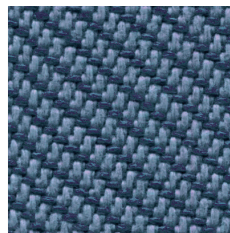
# oceanic SD

price group: 4

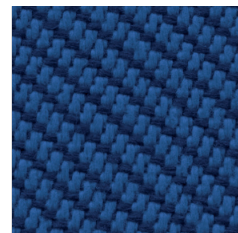
\* Standard Bejot offer  
standardowa oferta Bejot  
Bejots Standardangebot



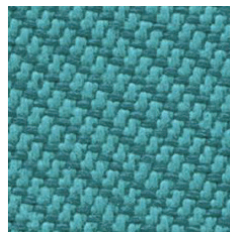
OOC15\*



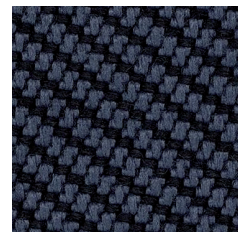
OOC11\*



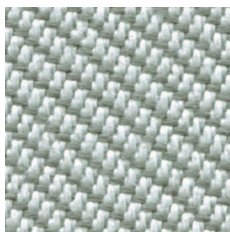
OOC06



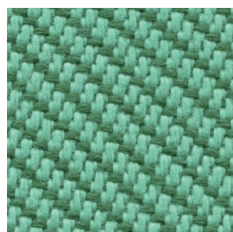
OOC02



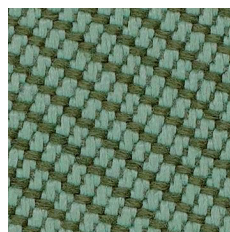
OOC26



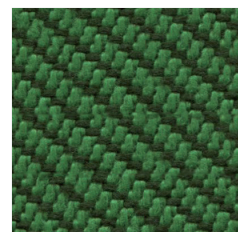
OOC13



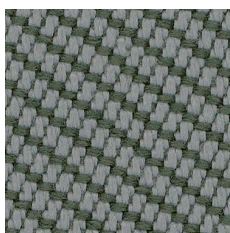
OOC04\*



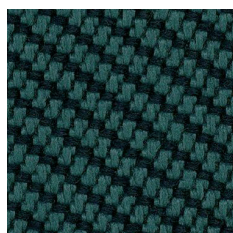
OOC24



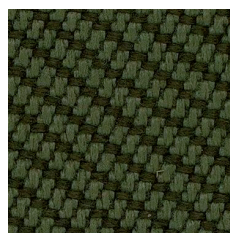
OOC03



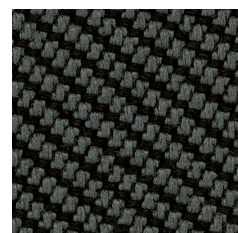
OOC21



OOC22



OOC19



OOC20

Zajęcia kolorów produktów na stronie,  
mogą odbiegać od rzeczywistych.

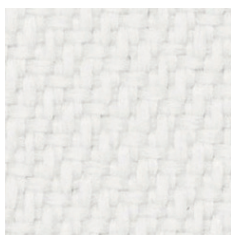
Colours of products presented on this  
website may differ from the actual colours.

Die Bildern der Farben der Produkte auf der  
Website können vom Original abweichen.

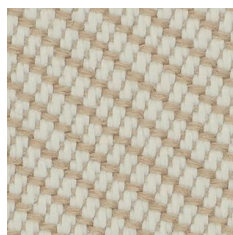
# oceanic SD

price group: 4

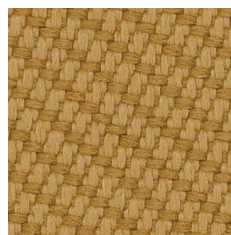
\* Standard Bejot offer  
standardowa oferta Bejot  
Bejots Standardangebot



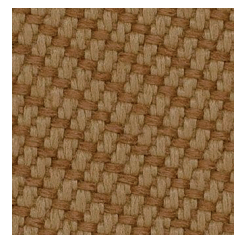
OOC17



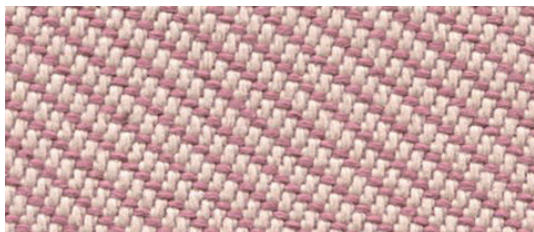
OOC23



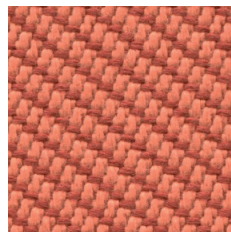
OOC30



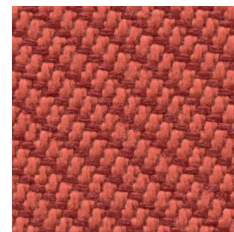
OOC28



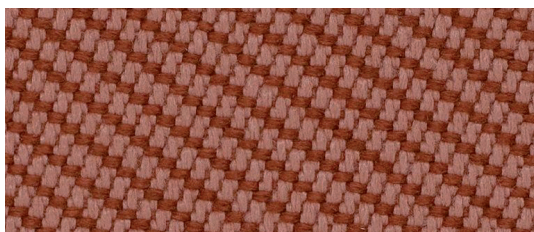
OOC16\*



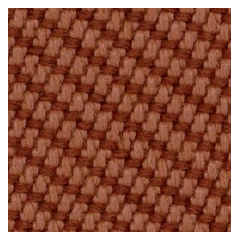
OOC05\*



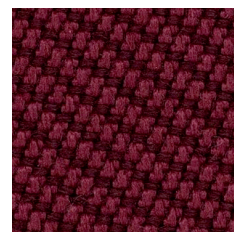
OOC12\*



OOC27



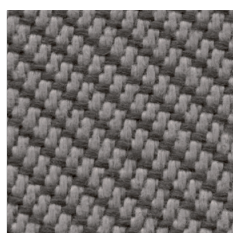
OOC25



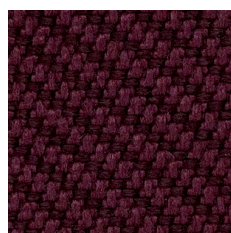
OOC29



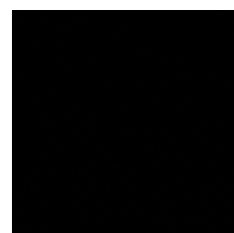
OOC14\*



OOC08



OOC18



OOC01\*

Zjęcia kolorów produktów na stronie,  
mogą odbiegać od rzeczywistych.

Colours of products presented on this  
website may differ from the actual colours.

Die Bildern der Farben der Produkte auf der  
Website können vom Original abweichen.

## pl:

### Skład

100% poliester pochodzący z recyklingu  
(z czego w 50% z przędzy Sequal)

### Waga

497 g/m<sup>2</sup> ± 5%

### Szerokość rolki

140 cm

### Odporność na ścieranie

≥100 000 cykli Martindale'a  
(UNI EN ISO 12947-2:2016)

### Odporność na światło

4-6 (ISO 105-B02)  
OOC16:4/5 (ISO 105-B02)

### Odporność koloru na tarcie

Mokre: 4 (ISO 105-X12)  
Suche: 4 (ISO 105-X12)

### Certyfikaty trudnopalności

- BS EN 1021-1
- BS EN 1021-2
- BS 7176 (Low Hazard)

### Czyszczenie



Dopuszcza się występowanie różnic odcieni  
pomiędzy poszczególnymi partiami produkcyjnymi.

## de:

### Zusammensetzung

100% recyceltes post-consumer Polyester  
(enthält 50% Sequal Garn)

### Gewicht

497 g/m<sup>2</sup> ± 5%

### Rollenbreite

140 cm

### Scheuerfestigkeit

100 000 Zyklen Martindale  
(UNI EN ISO 12947-2:2017)

### Lichtechtheit

4-6 (ISO 105-B02)  
OOC16:4/5 (ISO 105-B02)

### Reibechtheit

Nass: 4 (ISO 105-X12)  
Trocken: 4 (ISO 105-X12)

### Feuersicherung

- BS EN 1021-1:2014
- BS EN 1021-2:2014
- BS 7176 (Low Hazard)

### Reinigung



Farbtonunterschiede zwischen einzelnen  
Produktionschargen sind zulässig.

## en:

### Composition

100% post-consumer recycled polyester  
(including 50% Sequal yarn)

### Weight

497 g/m<sup>2</sup> ± 5%

### Roll width

140 cm

### Abrasion resistance

100 000 Martindale cycles  
(UNI EN ISO 12947-2:2017)

### Light fastness

4-6 (ISO 105-B02)  
OOC16:4/5 (ISO 105-B02)

### Fastness to rubbing

Wet: 4 (ISO 105-X12)  
Dry: 4 (ISO 105-X12)

### Flammability

- BS EN 1021-1:2014
- BS EN 1021-2:2014
- BS 7176 (Low Hazard)

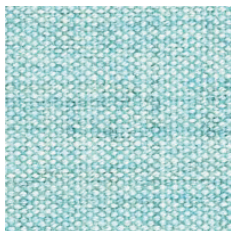
### Cleaning



Shade differences between individual  
production batches are allowed.

# remix SD

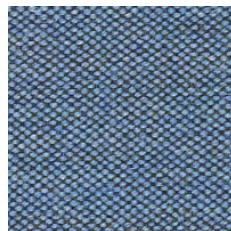
price group: 4



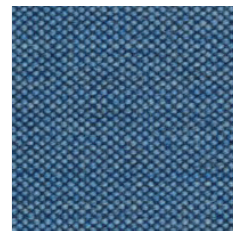
RX823



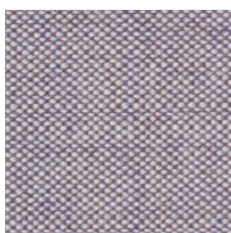
RX816



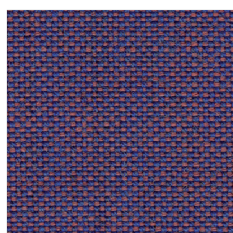
RX743



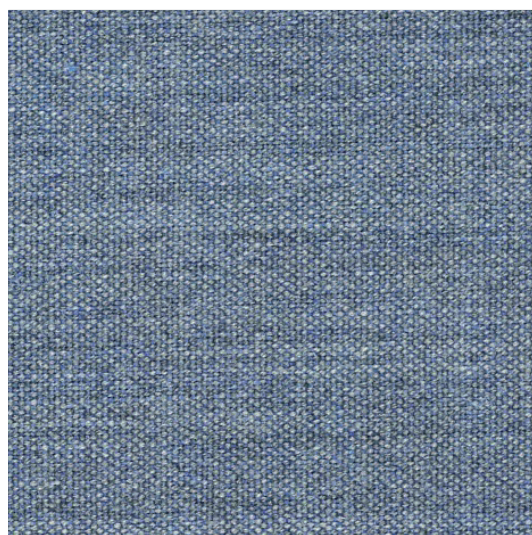
RX762



RX682



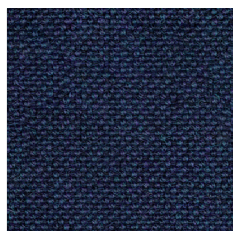
RX686



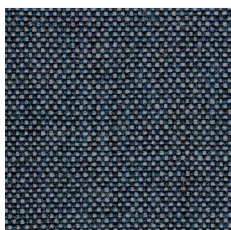
RX733



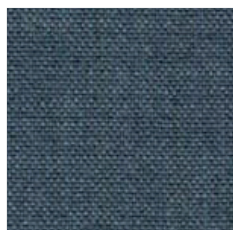
RX773



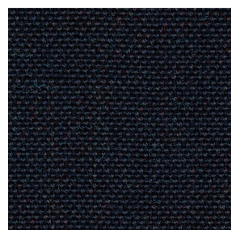
RX866



RX716



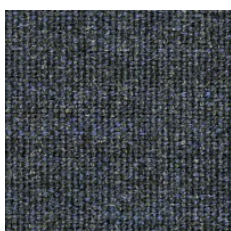
RX836



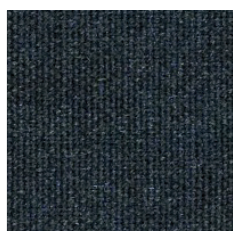
RX796



RX996



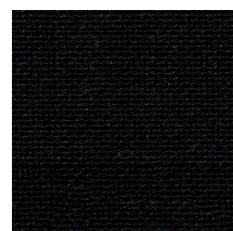
RX753



RX873



RX196



RX296

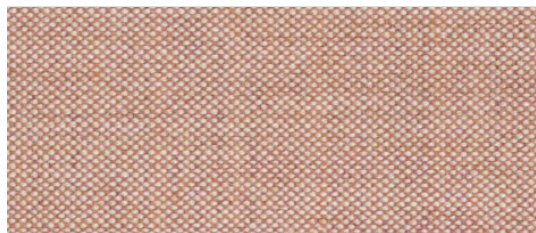
Zajęcia kolorów produktów na stronie, mogą odbiegać od rzeczywistych.

Colours of products presented on this website may differ from the actual colours.

Die Bildern der Farben der Produkte auf der Website können vom Original abweichen.

# remix SD

price group: 4



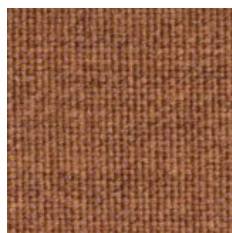
RX612



RX406



RX326



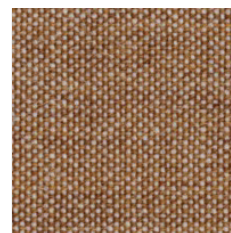
RX452



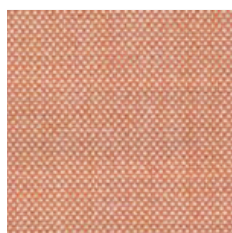
RX422



RX433



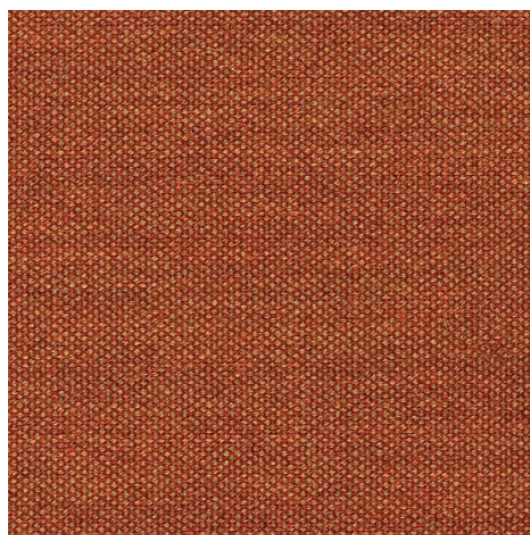
RX252



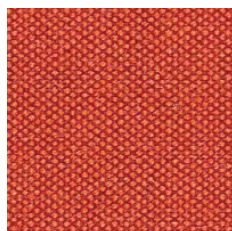
RX516



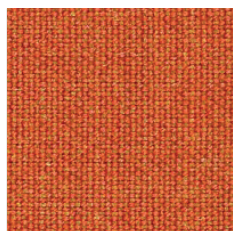
RX536



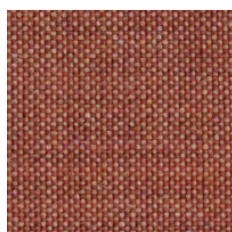
RX443



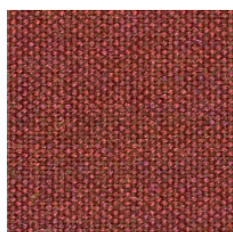
RX643



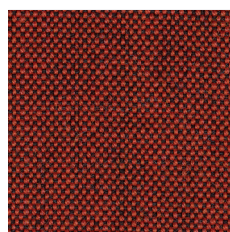
RX543



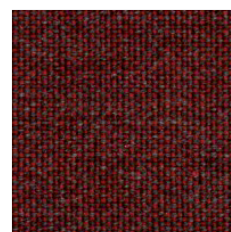
RX632



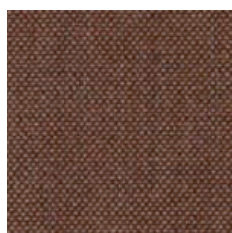
RX653



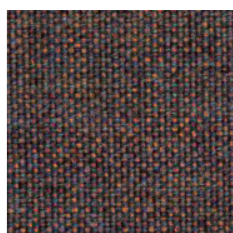
RX566



RX662



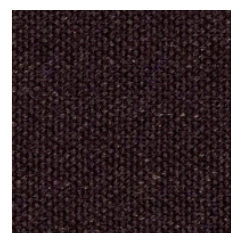
RX346



RX672



RX373



RX783

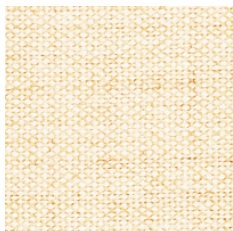
Zajęcia kolorów produktów na stronie, mogą odbiegać od rzeczywistych.

Colours of products presented on this website may differ from the actual colours.

Die Bildern der Farben der Produkte auf der Website können vom Original abweichen.

# remix SD

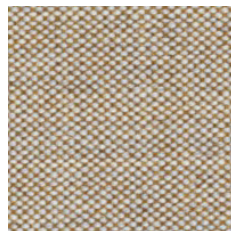
price group: 4



RX113



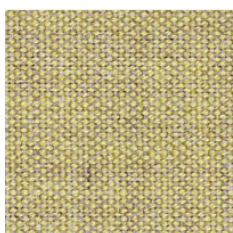
RX223



RX242



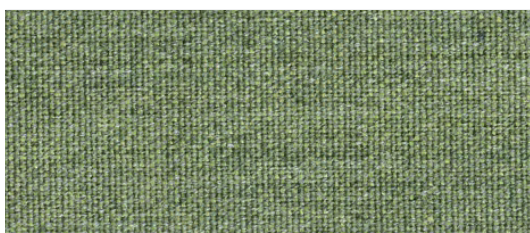
RX233



RX923



RX912



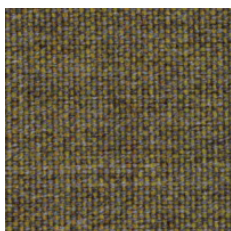
RX933



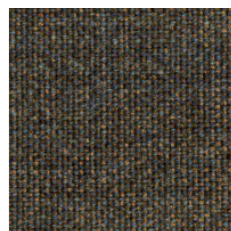
RX412



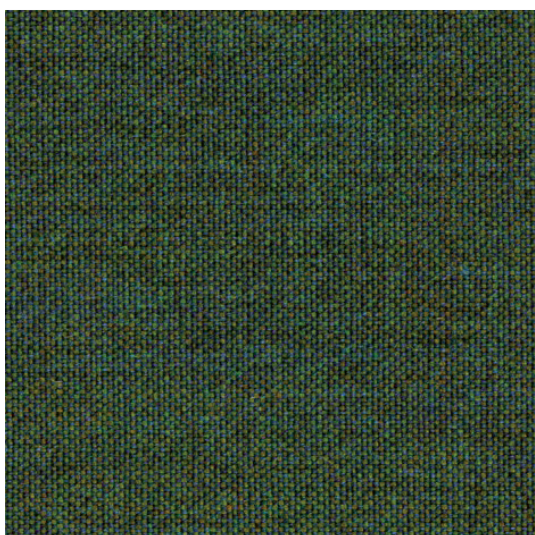
RX942



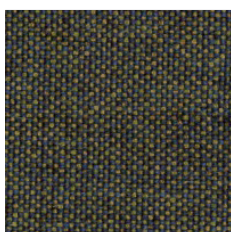
RX962



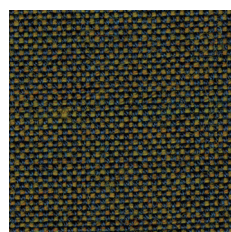
RX954



RX982



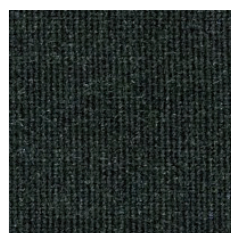
RX842



RX842



RX393



RX973

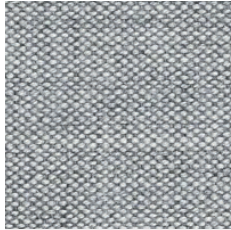
Zajęcia kolorów produktów na stronie, mogą odbiegać od rzeczywistych.

Colours of products presented on this website may differ from the actual colours.

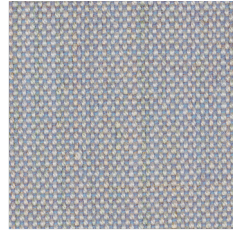
Die Bildern der Farben der Produkte auf der Website können vom Original abweichen.

# remix SD

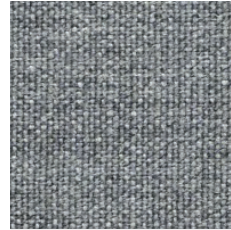
price group: 4



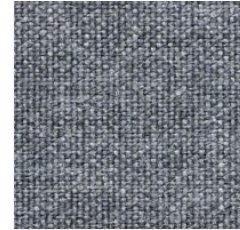
RX123



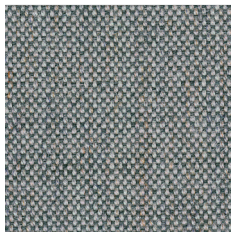
RX606



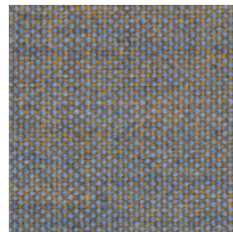
RX133



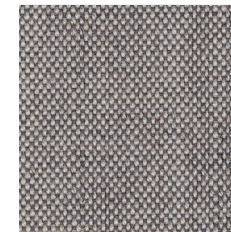
RX143



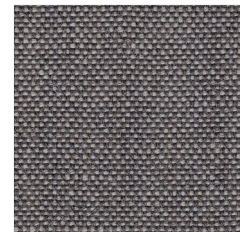
RX906



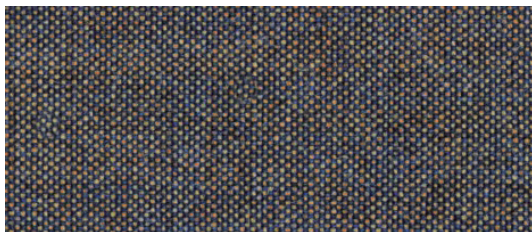
RX722



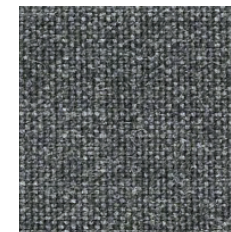
RX126



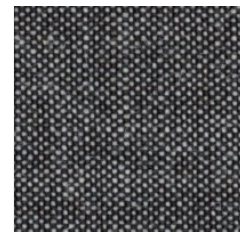
RX136



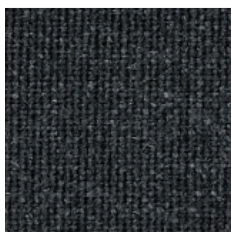
RX852



RX163



RX152



RX173



RX183



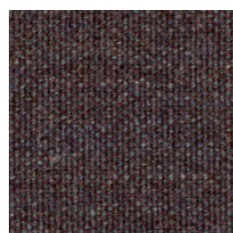
RX276



RX356



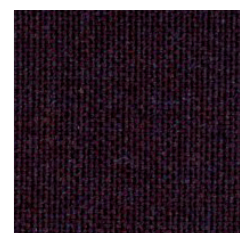
RX286



RX362



RX383



RX692

Zajęcia kolorów produktów na stronie, mogą odbiegać od rzeczywistych.

Colours of products presented on this website may differ from the actual colours.

Die Bildern der Farben der Produkte auf der Website können vom Original abweichen.

## pl:

### Skład

90% wełna, 10% nylon

### Waga

304 g/m<sup>2</sup>

### Szerokość rolki

140 cm

### Odporność na ścieranie

100 000 cykli Martindale'a  
(EN ISO 12947-2:2016)

### Pilling

4 (EN ISO 12945-2:2000)

### Odporność na światło

5-7 (EN ISO 105:B02:2014)

### Odporność koloru na tarcie

Mokre: 4 (EN ISO 105-X12:2001)  
Suche: 4-5 (EN ISO 105-X12:2001)

### Certyfikaty trudnopalności

- EN 1021-1/2
- BS 5852 ignition source 3

### Czyszczenie



Dopuszcza się występowanie różnic odcieni pomiędzy poszczególnymi partiami produkcyjnymi.

## de:

### Zusammensetzung

90% Schurwolle, 10% Nylon

### Gewicht

304 g/m<sup>2</sup>

### Rollenbreite

140 cm

### Scheuerfestigkeit

100 000 Zyklen Martindale  
(EN ISO 12947-2:2016)

### Pilling

4 (EN ISO 12945-2:2000)

### Lichtechtheit

5-7 (EN ISO 105:B02:2014)

### Reibechtheit

Nass: 4 (EN ISO 105-X12:2001)  
Trocken: 4-5 (EN ISO 105-X12:2001)

### Feuersicherung

- EN 1021-1/2
- BS 5852 ignition source 3

### Reinigung



Farbtonunterschiede zwischen einzelnen Produktionschargen sind zulässig.

## en:

### Composition

90% wool, 10% nylon

### Weight

304 g/m<sup>2</sup>

### Roll width

140 cm

### Abrasion resistance

100 000 Martindale cycles  
(EN ISO 12947-2:2016)

### Pilling

4 (EN ISO 12945-2:2000)

### Light fastness

5-7 (EN ISO 105:B02:2014)

### Fastness to rubbing

Wet: 4 (EN ISO 105-X12:2001)  
Dry: 4-5 (EN ISO 105-X12:2001)

### Flammability

- EN 1021-1/2
- BS 5852 ignition source 3

### Cleaning



Shade differences between individual production batches are allowed.

**:5**

grupa cenowa    Preicegruppe    price group

# steelcut trio 3 SD

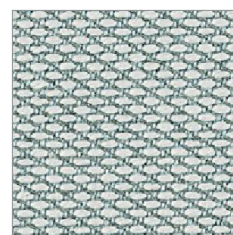
price group: 5



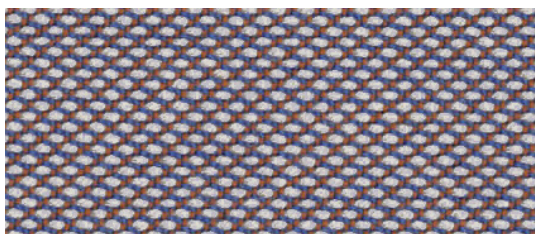
906



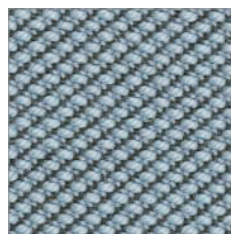
105



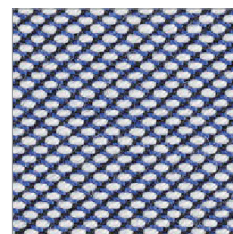
113



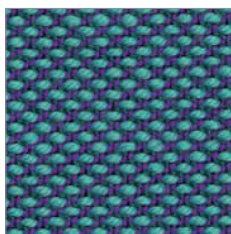
806



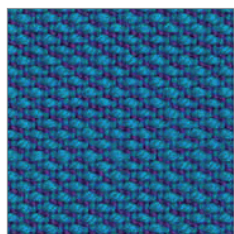
713



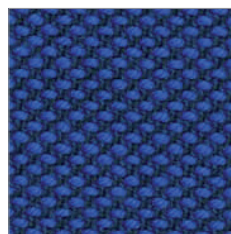
716



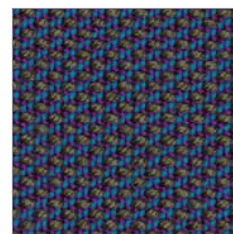
983



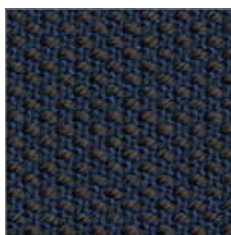
865



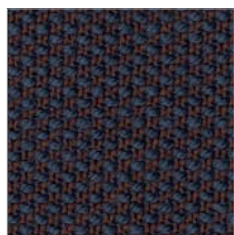
746



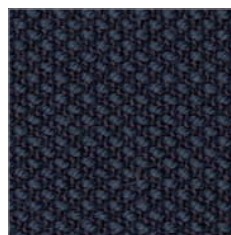
883



756



776



796



195

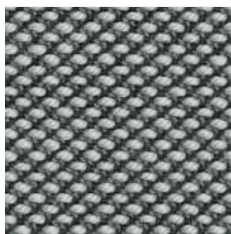
Colours of products presented on this website may differ from the actual colours.

Zdjęcia kolorów produktów na stronie, mogą odbiegać od rzeczywistych.

Die Bildern der Farben der Produkte auf der Website können vom Original abweichen.

# steelcut trio 3 SD

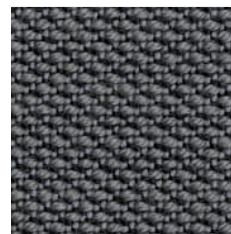
price group: 5



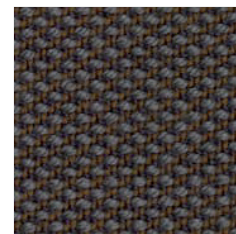
133



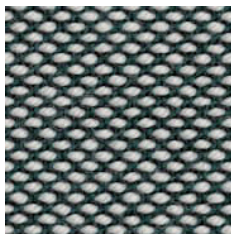
246



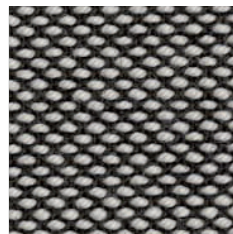
153



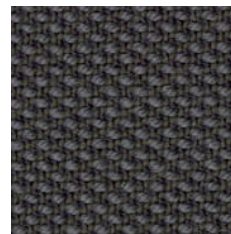
376



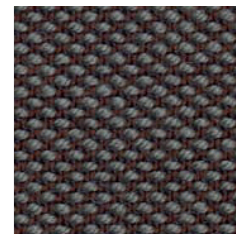
916



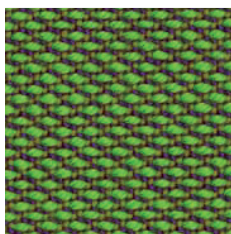
124



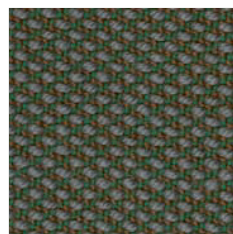
176



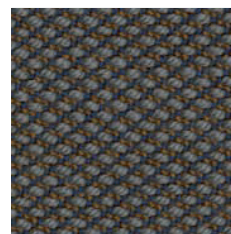
276



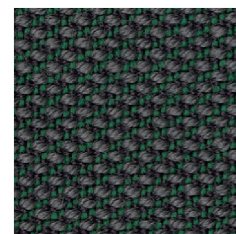
953



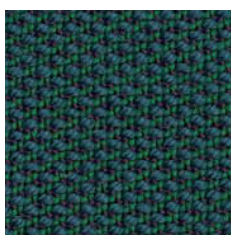
946



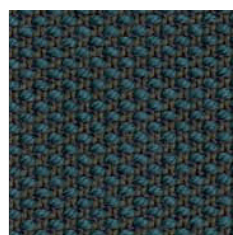
266



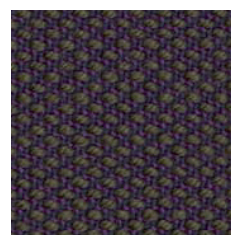
966



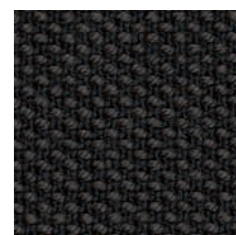
976



996



283



383

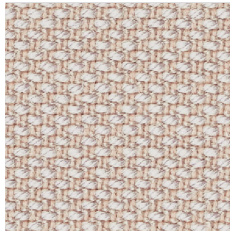
Colours of products presented on this website may differ from the actual colours.

Zdjęcia kolorów produktów na stronie, mogą odbiegać od rzeczywistych.

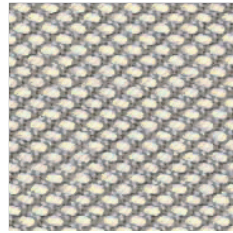
Die Bildern der Farben der Produkte auf der Website können vom Original abweichen.

# steelcut trio 3 SD

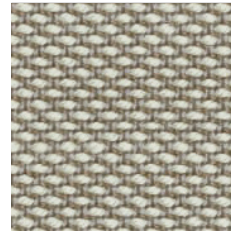
price group: 5



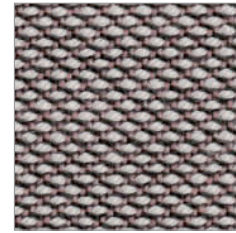
226



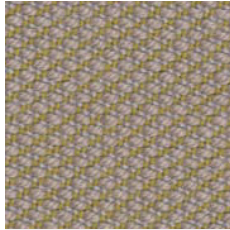
205



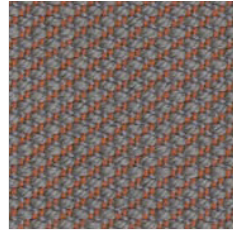
213



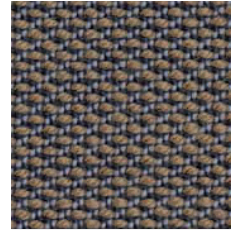
616



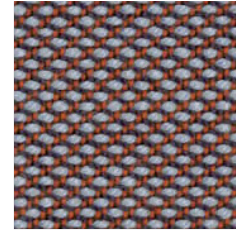
236



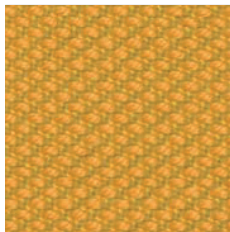
426



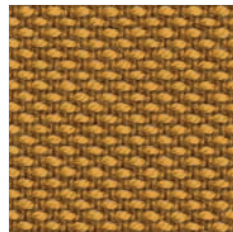
253



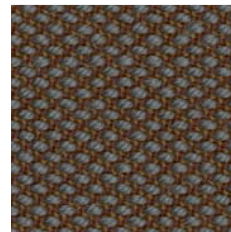
416



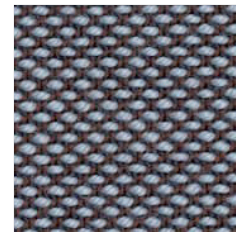
446



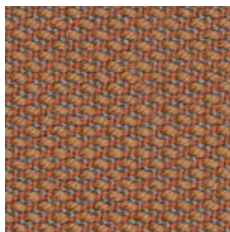
453



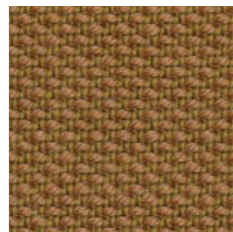
476



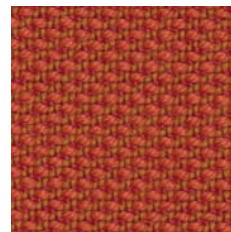
336



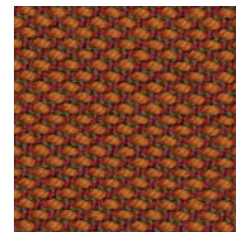
436



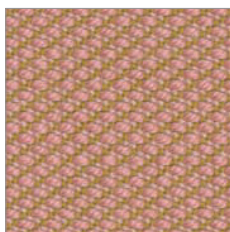
466



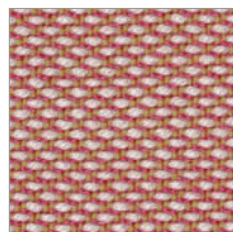
533



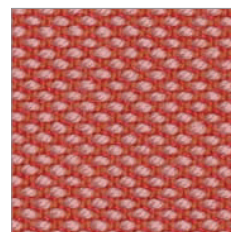
576



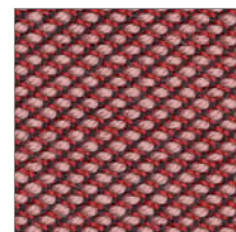
506



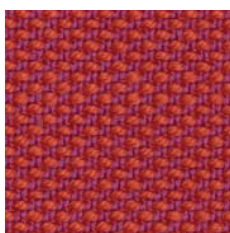
515



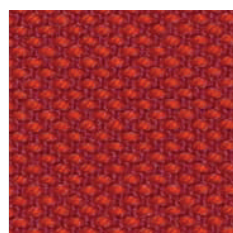
526



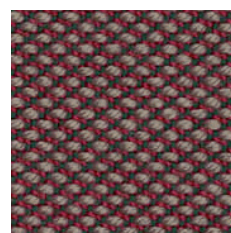
636



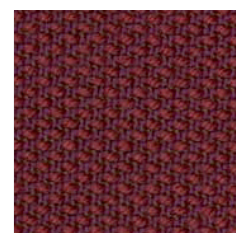
553



666



645



686

Colours of products presented on this website may differ from the actual colours.

Zdjęcia kolorów produktów na stronie, mogą odbiegać od rzeczywistych.

Die Bildern der Farben der Produkte auf der Website können vom Original abweichen.

## pl:

### Skład

90% wełna, 10% poliamid

### Waga

550 g/m<sup>2</sup>

### Szerokość rolki

140 cm

### Odporność na ścieranie

100 000 cykli Martindale'a  
(EN ISO 12947)

### Odporność na światło

5-7 (ISO 105-B02)

### Pilling

4 (EN ISO 12947-2:2000)

### Certyfikaty trudnopalności

- EN 1021-1/2
- BS 5852:2006 (2011) Ignition Source 3
- DIN 4102 B2

### Czyszczenie



Dopuszcza się występowanie różnic odcieni pomiędzy poszczególnymi partiami produkcyjnymi.

## de:

### Zusammensetzung

90% Schurwolle, 10% Polyamid

### Gewicht

550 g/m<sup>2</sup>

### Rollenbreite

140 cm

### Scheuerfestigkeit

100 000 Zyklen Martindale  
(EN ISO 12947)

### Lichtechtheit

5-7 (ISO 105-B02)

### Pilling

4 (EN ISO 12947-2:2000)

### Feuersicherung

- EN 1021-1/2
- BS 5852:2006 (2011) Ignition Source 3
- DIN 4102 B2

### Reinigung



Farbtonunterschiede zwischen einzelnen Produktionschargen sind zulässig.

## en:

### Composition

90% wool, 10% polyamide

### Weight

550 g/m<sup>2</sup>

### Roll width

140 cm

### Abrasion resistance

100 000 Martindale cycles  
(EN ISO 12947)

### Light fastness

5-7 (ISO 105-B02)

### Pilling

4 (EN ISO 12947-2:2000)

### Flammability

- EN 1021-1/2
- BS 5852:2006 (2011) Ignition Source 3
- DIN 4102 B2

### Cleaning



Shade differences between individual production batches are allowed.