

Price Group - 1

Xtreme (Camira)

Xtreme is a crepe fabric made from 100% recycled polyester that features exceptional Euro flammability performance. Extra stretch and structure gives an irregular, shiny finish.

Composition: 100% recycled polyester

Abrasion resistance: 100 000 Martindale

Flammability: BS EN 1021: 1-2 (Cigarette & match), BS 7176 Low & Medium Hazard, BS 5852 Section 4 Crib 5, DIN 4102 B1, UNI 9175 Class 1 IM, CA TB 117-2013

Light fastness: 6 (ISO 105 - B02: 2013)

Pilling: 5 (EN ISO 12945-2)

Environmental facts: EU Ecolabel, Oeko-Tex® Standard 100, Indoor Advantage™ "Gold", 100% free of heavy metals, ISO 14001 certified company



Xtreme Havana
YS009 - black
EXR009



Xtreme Cayman
ys 024 - blue
EXR024



Xtreme Costa
YS026
EXR026



Xtreme Panama
YS079 - red
EXR079



Xtreme Blizzar
YS081 - grey
EXR081



Xtreme Slip
YS094
EXR094



Xtreme Padang
YS145
EXR145

Price Group - 2

Select (Gabriel)

Select is a classic woolen fabric with a tightly woven relief structure, combining excellent softness, stretch and durability. Its rich texture with the interplay of light and shadow add depth in all the colours in the palette.

Composition: 85% wool, 15% polyamide

Abrasion resistance: 200 000 Martindale

Flammability: BS EN 1021: 1-2, BS 5852 0&1, BS5852 Crib 5, CA TB 117-2013, IMO MSC 307(88) Annex 1 part 8/MED registration IMO

Light fastness: 5-8 (EN ISO 105 - B02)

Pilling: 4 (EN ISO 12945-2)

Environmental facts: EU Ecolabel, Oeko-Tex® Standard 100, 100% free of heavy metals, ISO 14001 certified company



Select 60003
SC60003



Select 60051
SC60051



Select 60134
SC60134



Select 60139
SC60139



Select 60999
SC60999



Select 61190
SC61190



Select 63102
SC63102



Select 64216
SC64216



Select 66071
SC66071



Select 66144
SC66144



Select 66194
SC66194



Select 68209
SC68209

Price Group - 3

Capture (Gabriel)

Capture is a lightly felted and multi-coloured wool fabric combining softness, stretch and strenght. It fuses light and dark colours to a refined melange pattern in subtle nuances, which add richness and depth to the design.

Composition: 85% wool, 15% polyamide

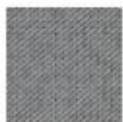
Abrasion resistance: 200 000 Martindale

Flammability: BS EN 1021: 1-2 (Cigarette & match), BS 5852 Part 1 0,1 (Cigarette & match), CA TB 117-2013

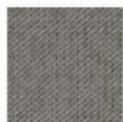
Light fastness: 5-7 (EN ISO 105-B02)

Pilling: 4-5 (EN-ISO 12945-2)

Environmental facts: EU Ecolabel, Oeko-Tex® Standard 100, 100% free of heavy metals, ISO 14001 certified company



Capture 4102
CPT4102



Capture 4401
CPT4401



Capture 4601
CPT4601



Capture
CPT5102
CPT5102



Capture 5501
CPT5501



Capture 5701
CPT5701



Capture 6101
CPT6101



Capture 6401
CPT6401



Capture 6501
CPT6501



Capture 6601
CPT6601

Price Group - 3

Nexus (Camira)

Nexus is a polyester knit in a sleek and stylish pinprick dot matrix design effect giving a granulated structured surface. The black yarn foundation highlights the structured surface in combination with fresh but subtle colours.

Composition: 100% polyester

Abrasion resistance: 100 000 Martindale

Flammability: BS EN 1021: 1-2 (Cigarette & match), BS 7176 Low Hazard, UNI 9175 Class 1 IM

Light fastness: 5 (EN ISO 105 - B02)

Pilling: 4/5 (EN ISO 12945-2)

Environmental facts: EU Ecolabel, Oeko-Tex® Standard 100, 100% free of heavy metals, ISO 14001 certified company



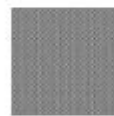
Nexus Pewter
UN01
NEX001



Nexus 003
NEX003



Nexus green
005
NEX005



Nexus light grey
007
NEX007



Nexus light blue
008
NEX008



Nexus Petrol
010
NEX010



Nexus darkgrey
011
NEX011



Nexus black
013
NEX013



Nexus dark blue
015
NEX015



Nexus red 016
NEX016

Price Group - 3

Sprint (Camira)

Sprint is a classic stretch knit fabric made from 100% polyester. A smooth cellular construction with a subdued finish gives a minimalistic and light expression.

Composition: 100% polyester

Abrasion: > 100 000 Martindale

Flammability: BS EN 1021: 1&2 (Cigarette & match), BS 7176: 2007 Low Hazard, UNI 9176 Class 1 IM, UNI 9175 Klasse 1 IM, CA TB 117-2013

Light fastness: 6 (ISO 105-B02)

Pilling: 4/5 (BS EN ISO 12945-2)

Environmental facts: 100% free of heavy metals, ISO 14001 certified company



Sprint Relay
PS002
SRT002



Sprint Hurdle
PS001
SRT001



Sprint PS028
SRT028



Sprint
Champion
PS041
SRT041



Sprint Bound
PS042
SRT042



Sprint PS004
SRT004



Sprint PS010
SRT010

Price Group - 3

Note (Gabriel)

Note is a soft and noble fabric which, with its classic satin structure, allows the wools natural lustre to shine and impress.

Composition: 85% worsted wool, 15% polyamide

Abrasion resistance: 200 000 Martindale

Flammability: BS EN 1021: 1-2 (Cigarette & match), BS 5852 0&1, BS 5852 crib 5, IMO MSC 307 (88) Annex 1 part 8, CA TB 117-2013

Light fastness: 5-8 (EN ISO 105 - B02)

Pilling: 4 (EN ISO 12945-2)

Environmental facts: EU Ecolabel, Oeko-Tex® Standard 100, 100% free of heavy metals, ISO 14001 certified company



Note 60088
NT60088



Note 60999
Black
NT60999



Note 60003
NT60003



Note 60087
Grey
NT60087



Note 61148
NT61148



Note 67033
NT67033



Note 67066
NT67066

Price Group - 3

Patina (Camira)

Patina has a high content of natural fibers, combining wool and flax for a delicate feel. Drawing inspiration from Pattern in Nature revealed to us by its fine structure and carefully balanced colours. It is about designing with nature to achieve beauty with performance.

Composition: 69% Wool, 22% Flax, 8% Polyamide, 1% Viscose

Abrasion resistance: > 100 000 Martindale

Flammability: BS EN 1021: 1-2 (Cigarette & match), BS 7176, BS 5852

Light fastness: 5 (EN ISO 105-B02)

Pilling: 3 (EN ISO 12945-2)

Environmental facts: EU Ecolabel, Indoor Advantage™ "Gold", 100% free of heavy metals, ISO 14001 certified company



Patina
Weathered
PAT01
PAT001



Patina Veneer
PAT04
PAT004



Patina Bloomed
PAT15
PAT015



Patina Lustre
PAT16
PAT016



Patina Chiselled
PAT24
PAT024



Patina Stony
PAT034
PAT034

Price Group - 4

Comfort+ (Gabriel)

Comfort+ has a uniform stretchability and excellent non-pilling properties. A unique combination of fibres giving a durable soft surface.

Composition: 51% polyester, 37% recycled polyester, 12% polyurethane

Abrasion resistance: 150 000 Martindale

Flammability: BS EN 1021: 1-2 (Cigarette & match), CA TB 117-2013, NFP 92-503:M3, ÖNORM B 3825-B2-3800-Q1 UK (Flovon), UNI 9175 1 IM, BS 5852 Part 1 0,1 (Cigarette & match)

Light fastness: 5-7 (EN ISO 105-B02)

Pilling: 5 (EN ISO 12945-2)

Environmental facts: Oeko-Tex® Standard 100, 100% free of heavy metals, ISO 14001 certified company



Comfort 0040 -
blue
CMF0040



Comfort 0049 -
grey
CMF0049



Comfort 0050 -
black
CMF0050



Comfort 1414 -
red
CMF1414

Suldal (GU)

Suldal is part of the 100% Norwegian wool trio Sirdal, Suldal and Setesdal. These fabrics are uniquely short-travelled in every part of the process – 100% pure Norwegian wool manufactured in Norway. Norwegian wool with its distinctive brilliance, resilience and durability is expressed through rich structures that evoke authenticity paired with chic and modern comfort.

Composition: 100% New Norwegian wool

Abrasion resistance: > 57 000 Martindale

Flammability: BS EN 1021: 1-2 (Cigarette & match), IMO FTP code 2010: Part 8

Light fastness: 5-7 (EN ISO 105-B02)

Pilling: 3-4 (EN ISO 12945-2)

Environmental facts: Locally produced in Norway, 100% free of heavy metals, ISO 14001 certified company



Suldal 5098-
130 color 180
SUL180



Suldal SUL810
SUL810

Sirdal (GU)

Sirdal is part of the 100% Norwegian wool trio Sirdal, Suldal and Setesdal. These fabrics are uniquely short-travelled in every part of the process – 100% pure Norwegian wool manufactured in Norway. Norwegian wool with its distinctive brilliance, resilience and durability is expressed through rich structures that evoke authenticity paired with chic and modern comfort.

Composition: 100% New Norwegian wool

Abrasion resistance: 57 000 Martindale

Flammability: BS EN 1021: 1-2 (Cigarette & match), IMO FTP code 2010: Part 8

Light fastness: 5-7 (EN ISO 105-B02)

Pilling: 3-4 (EN ISO 12945-2)

Environmental facts: Locally produced in Norway, 100% free of heavy metals, ISO 14001 certified company



Sirdal 5096
farge 190
SRD190



Sirdal SRD730
SRD730

Steelcut Trio 3 (Kvadrat)

Steelcut Trio 3 is a strong worsted wool and polyamide woven fabric, made with three different coloured yarns. The colours and the special weave create a three-dimensional surface where the colours seem to change depending on the angle of perspective.

Composition: 90% worsted new wool, 10% polyamide

Abrasion resistance: 100 000 Martindale

Flammability: AS/NZS 3837, Class 2, BS 5852, ig. s. 2-3, DIN 4102 B2, ÖNORM B1/Q1, BS EN 1021: 1-2 (Cigarette & match), IMO MSC 307(88) Annex 1 part 8, NF D 60 013, NFPA 260, UNI 9175 1IM, CA TB 117-2013

Light fastness: 5-7 (EN ISO 105-B02)

Pilling: 4 (EN ISO 12945-2)

Environmental facts: EU Ecolabel, 100% free of heavy metals, ISO 14001 certified company



Steelcut Trio
1192 Black
STT1192



Steelcut Trio
133 light grey
STT133



Steelcut Trio
153 grey
STT153



Steelcut Trio
1652 red
STT1652



Steelcut Trio
253 beige/grey
STT253



Steelcut Trio
383
STT383



Steelcut Trio
883 blue/grey
STT883

Price Group - 6

Paloma Soft (Wollsdorf)

High quality semi-aniline leather. All our standard colours from Paloma have a special finish adding a particular softness to the leather. Excellent friction and breathing properties. The surface may feature small scars and marks resulting from insect bites etc. These are proof of the natural origin of the product and are part of its character.

Flammability: BS EN 1021: 1-2 (Cigarette & match), BS 5852 P 2 Crib 5, IMO MSC 307(88) Annex 1 part 8

Light fastness: 6 (EN ISO 105-B02)

Rubbing: Wet 80/4 - Dry 1000/4 - Sweat 50/4 - ISO11640

Finish-adhesion: ≥ 2.5 N/CM - ISO 11644

Tear-strength: ≥ 20 N DIN EN ISO 3377-1

Environmental facts: 100% free of heavy metals, tanned without using chromium salts. BlueAngel, ECO₂L-certificate, ISO 14001 certified company



Antigo Soft
Leath. black
56100
ATG56100



Antigo Soft
55115
ATG55115



Antigo Soft
Maroon 55130
ATG55130



Antigo Soft
Nightshade
55185
ATG55185



Antigo Soft
55206
ATG55206